



**IRRIGATION DEPARTMENT
GOVERNMENT OF BALOCHISTAN**

**PROJECT DESIGN, CONSTRUCTION SUPERVISION AND
IMPLEMENTATION SUPPORT FOR BALOCHISTAN WATER
RESOURCES DEVELOPMENT SECTOR PROJECT
(LOAN 3700-PAK)**



**SOCIAL DUE DILLIGENCE REPORT (SDDR)
PASHTA KHAN & GRAMBOWAD PIS SUBPROJECT (MRB)**

JULY 2021

A Joint Venture of



National Engineering Services Pakistan (Pvt) Limited Lahore (Lead Partner)



Rehman Habib Consultants (Pvt) Limited (JV Partner)



Engineering General Consultants EGC (Pvt) Limited (JV Partner)



in association with

Asian Advisory Services (Pvt) Limited

DOCUMENT INFORMATION

Category	Information
Document	Social Due Diligence Report (SDDR)
Version	1.0
Department	NESPAK-Water & Agriculture Division
Project	Project Design, Construction Supervision and Implementation Support for Balochistan Water Resources Development Sector Project
Status	Final
Author(s)	NESPAK, RHC, EGC & AAS
Contributors	NESPAK, RHC, EGC & AAS
Approver	Team Leader, Project Design, Construction Supervision and Implementation Support Consultants, Balochistan Water Resources Development Sector Project
Issue Date	JULY 2021 , revised July 2024
Distribution	Irrigation Department, Government of Balochistan
Disclaimer	This document contains confidential information. Do not distribute this document without prior approval from GM/Head W&A, NESPAK

REVISION HISTORY

Date	Description	Version	Author
July, 2021	Social Due Diligence Report (SDDR)	1.0	Rana Abdur Rehman
July, 2024	Revised Social Due Diligence Report (SDDR)	1.0	Rana Abdur Rehman

**PROJECT DESIGN, CONSTRUCTION SUPERVISION AND IMPLEMENTATION
SUPPORT FOR BALUCHISTAN WATER RESOURCES DEVELOPMENT SECTOR
PROJECT**

**SOCIAL DUE DILIGENCE REPORT (SDDR)
PASHTA KHAN & GRAMBOWAD PIS SUBPROJECT- MULA RIVER BASIN**

TABLE OF CONTENTS

DOCUMENT INFORMATION	i
REVISION HISTORY	ii
TABLE OF CONTENTS	iii
LIST OF TABLES	v
LIST OF FIGURES	vi
LIST OF ANNEXURES	vii
ABBREVIATIONS	viii
1 INTRODUCTION AND BACKGROUND	1-1
1.1 SECTOR LOAN SUBPROJECTS	1-1
1.2 PASHTA KHAN & GRAMBOWAD PERENNIAL IRRIGATION SUB-PROJECT 1-2	
1.3 LARF AS A GUIDING FRAMEWORK.....	1-4
2 NEED OF SDDR	2-1
2.1 SUBPROJECT CATEGORIZATION FOR INVOLUNTARY RESETTLEMENT (IR) AND INDIGENOUS PEOPLES (IPS)	2-1
3 THE PROJECT	3-1
3.1 PROJECT OBJECTIVE	3-1
3.2 THE SUBPROJECT OF PASHTA KHAN AND GRAMBOWAD PIS.....	3-1
3.3 SCOPE OF LAND ACQUISITION AND RESETTLEMENT (LAR) IMPACTS	3-1
4 SOCIO-ECONOMIC PROFILE OF THE SUB-PROJECT AREA	4-1
4.1.1 Land Use.....	4-1
4.1.2 Water Rights	4-1
4.1.3 Consensus on Water Use.....	4-1
4.2 METHODOLOGY AND SAMPLING	4-1
4.2.1 Tribes/Caste, Language and Religion.....	4-2
4.2.2 Literacy Ratio	4-2
4.2.3 Main Occupation of the Respondents.....	4-3
4.2.4 Social Facilities & Pressing Needs	4-3
4.2.5 Concerns.....	4-4
4.3 PURPOSE OF THE DUE DILIGENCE.....	4-4

4.4	APPROACH TO CONDUCT DUE DILIGENCE.....	4-4
5	PUBLIC CONSULTATIONS	5-1
5.1	CONSULTATION WITH MALE RESPONDENTS	5-1
5.1.1	Mitigation Measures	5-3
5.1.2	Suggestion	5-3
5.2	GENDER CONSULTATION.....	5-4
5.2.1	Meetings with Female Participants	5-4
5.2.2	Roles and Responsibilities of Women	5-6
5.2.3	Decision Making	5-6
5.2.4	Gender Issues in the Sub-Project Area	5-6
5.2.5	Pressing Needs of Women.....	5-7
5.2.6	Mitigation Measures to Address the Concerns	5-7
5.2.7	Provision of Social Structures.....	5-7
6	INFORMATION DISCLOSURE, CONSULTATION & GRIEVANCES REDRESSAL MECHANISM (GRM).....	6-1
6.1	SCOPE OF CONSULTATIONS	6-1
6.2	GENERAL RESPONSE	6-1
6.3	ANTICIPATED GENDER ISSUES DURING CONSTRUCTION ACTIVITIES	6-1
6.4	GRIEVANCE REDRESS MECHANISM (GRM)	6-1
6.4.1	Principles	6-2
6.4.2	Objectives	6-2
6.4.3	Structure & Procedure of Grievance Redress Mechanism.....	6-2
7	FINDINGS.....	7-1
8	CONCLUSIONS and RECOMMENDATIONS	8-1
8.1	CONCLUSIONS	8-1
8.2	RECOMMENDATIONS.....	8-1

LIST OF TABLES

Table 1-1: Proposed Irrigation Schemes and Status	1-2
Table 1-2: Project Components and Status of LAR Impacts.....	1-4
Table 2-1: Social Categorization of Pashta Khan and Grambowad PIS Scheme.....	2-1
Table 3-1: Width of ROW owned by BID	3-1
Table 4-1: Demography of the Sub-Project Area.....	4-1
Table 4-2: Social Amenities Available in the Surveyed Killies.....	4-3
Table 5-1: Key Persons of the Area to arrange Consultation Meetings	5-2
Table 5-2: List of Male Participants Contacted During Public Consultations.....	5-2
Table 5-3: List of Female Participants	5-5
Table 5-4: Provision of Social Structures/Facilities (Nos).	5-8

LIST OF FIGURES

Figure 1-1: Location map of Pashta Khan & Grambowad PIS Subproject	1-3
Figure 3-1: A typical Cross Section Showing ROW	3-2
Figure 6-1: Organogram for GRM	6-4

LIST OF ANNEXURES

Annexure- I: Photographic View of Consultation Meetings in Different Killies	1
Annexure- II: ADB-Checklist of Involuntary Resettlement Impact Categorization	2
Annexure- III: ADB,s Checklist of Indigenous People Impact Categorization.....	4
Annexure- IV: Scanned List of Participants of Pashta khan and Other Killi.....	6
Annexure- V: Scanned Certificate Confirming ROW Belonged to BID.....	11

ABBREVIATIONS

ADB	Asian Development Bank
ACD	Agriculture and Cooperative Departments
BID	Balochistan Irrigation Department
BWRDSP	Balochistan Water Resources Development Sector Project
EA	Executing Agency
SDDR	Social Due Diligence Report
FIS	Flood Irrigation System
PIS	Perennial Irrigation System
FO	Farmer Organization
GRC	Grievances Redress Committee
GRM	Grievances Redress Mechanism
LAR	Land Acquisition and Resettlement
LARF	Land Acquisition and Resettlement Framework
LARP	Land Acquisition and Resettlement Plan
NESPAK	National Engineering Services Pakistan
PIO	Project Implementation Office
PMO	Project Management Office
ROW	Right of Way
SPS	Safeguards Policy Statement
TOR	Terms of Reference

1 INTRODUCTION AND BACKGROUND

1. The Baluchistan Water Resources Development Project (BWRDP) aims to support the Government in water sector planning, management and investment on water sector infrastructure in selected river basins. It will assist the government for investment to improve water storage and supply infrastructure at the Zhob and Mula River basins and improve agricultural farm productivity. The water resource and infrastructure development works will be implemented in territorial jurisdictions of Qila Saifullah, Zhob and Khuzdar Districts along Zhob and Mula River Basins, respectively.
2. The project will (a) construct new small dams and flood irrigation (spate) systems; (b) improve 276 km of canals, drains, and karezes (subsurface water channels); (c) develop a satellite-based water information system; and (d) build capacity of the local communities, the Baluchistan Irrigation Department (BID), and the Agriculture and Cooperative Department (ACD). The indicative outcome of the BWRDP project will be to improve land and water resources, agricultural production and farm income.
3. BWRDP is a five (05) year project, where Asian Development Bank (ADB) provides \$100 million sector loan, \$ 5million JFPR and HLTF and the Government of Baluchistan funds \$31.14 million for investment on water sector infrastructure, capacity building and project management components.

1.1 SECTOR LOAN SUBPROJECTS

4. Balochistan is the largest province of Pakistan in terms of area and smallest in terms of population. It abounds and to a great extent excels in variety and subtlety of culture and tradition, climate and vegetation, geology, relief and resources. It is reckoned to be comparatively less developed, and the sole reason is scarcity and paucity of water.
5. Islamic Republic of Pakistan received a loan (3700-PAK) from the Asian Development Bank (ADB) for financing the Balochistan Water Resources Development Sector Project (BWRDSP). The project will support implementation of the integrated water resources management policy of the Government of Balochistan (GoB). The policy provides a comprehensive framework for the province to address the issues of water management and development in the context of basin approach, with water harvesting and groundwater recharging as an integral part of watershed management.
6. The project preparatory technical assistance Consultants (hereinafter called 'the TA Consultants) prepared the Balochistan Water Resource Development Sector Project (TA 8800-PAK, 2016-2018) followed by ADB's approval of a loan (3700-PAK) in the amount of \$100 million from its Ordinary Capital Resources, and by JFPR a grant of \$5.0 million (administered by ADB) in 2018. The TA Consultants assisted the GoB in screening and ranking of the five potential river basins (Hingol, Mula, Pishin, Loralai and Zhob) and selecting the two river basins and identifying 11 sub-projects for development.
7. Government of Balochistan has now hired the services of the Consultants for Project Design, Construction Supervision and Implementation Support for Balochistan Water Resources Development Sector Project (hereinafter called 'the Consultants) will help GoB in preparing detailed design of three core sub-projects and also feasibility studies and detailed design of balance of eight non-core sub-projects as listed in Table 1-1.

Table 1-1: Proposed Irrigation Schemes and Status

Sr. No.	NCB/ICB No.	Name of Subproject	Proposed IR/IP Category	Deliverable	Remarks	Deliverable Submission Status
1	NCB-01	Karkh Valley Dev. Scheme	C	SDDR	Submitted	Approved by ADB
2	NCB-02	Revised Kharzan Hatachi Infiltration Gallery	C	SDDR	Submitted	Approved by ADB
3	NCB-03	Sabakzai Command area Dev. Project, ZRB	C	SDDR	Submitted	Approved by ADB
4	NCB-04	Pashta Khan Subproject	C	SDDR	Submitted	Under Review
5	NCB-06	Revised Killi Sardar Akhtar Subproject. ZRB	C	SDDR	Submitted	Approved by ADB
6	NCB-07	Manyalo, Raiko and Rind Ali subproject, MRB	C	SDDR	Under Preparation	--
7	NCB-08	Ahmadzai Subproject ZRB	C	SDDR	Submitted	Approved by ADB
8	ICB-01/01	Revised Siri Toi Dam Subproject	C	SDDR	Submitted	Approved by ADB
9	ICB-01/02	Revised CAD under Siri Toi Dam Subproject, ZRB	C	SDDR	Submitted	Approved by ADB
10	ICB-01	Siri Toi Dam Subproject	A	LARP	Submitted	Approved by ADB

8. This final SDDR has been prepared for the Pashta Khan & Grambowad perennial irrigation subproject. The location of the sub-project is shown on google earth map in Figure 1.

1.2 PASHTA KHAN & GRAMBOWAD PERENNIAL IRRIGATION SUB-PROJECT

9. Areas of Pashta Khan and Grambowad are located at a distance of 7 km from each other on Anjira River which drains into Mula River near Pashta Khan. Schemes were bundled as one sub-project due to close proximity of smaller schemes. The infrastructure including head regulators, channels and other hydraulic structures were designed in isolation. Both the schemes were considered as one sub-project. Pashta Khan perennial irrigation scheme is proposed on Anjira River, a tributary of Mula River, in Pashta Khan. It is located in Tehsil Kharzan, District Khuzdar, Balochistan. The proposed weir lies in UTM Zone 42R at 282531.31 Northing and 3111451.19 Easting. Grambowad perennial irrigation schemes is located on Anjira River about 70 km from Khuzdar via Pashta Khan Road. The proposed off-take well is located at elevation of 1175 m, UTM Zone 42R, 3116793.27 North and 278441.97 East. Grambowad village is located on left bank of river.
10. The schemes are north-east of Khuzdar in Pashta Khan area at a distance of about 64 km, that is 28 km north via N-25 Highway (RCD Highway) to Baghbana area and 36 km east on unpaved road and hilly track to scheme location. Both schemes are located on bents at both right and left banks of Anjira River surrounded by high mountains having little area on flat terrain. The proposed sub-project will use perennial surface flow for irrigation. As available land is limited, available water will fulfill crop water requirement. Pashta Khan and Grambowad perennial irrigation schemes will bring 833 ha under cultivation out of which 456 ha is already under cultivation, while 377 ha will be additional command area. After construction of sub-project, 3 villages/killi Pashta Khan, Mengalabad and Grambowad will come under cultivation.

11. At Pashta Khan, flow to existing commands is diverted through locally constructed head up wall called “ganda”, which is made of stone, debris and bushes. The river flow is guided by an earthen unlined channel to command area. At some places, lined channels were provided.
12. At Grambowad, a ganda was constructed to guide river flow to command area, which is on left side of river. An earthen channel takes flow to command area. The locals have constructed pipe aqueducts at river crossings. An earthen pond located in command area stores surplus water for use in dry reason. The location map is depicted in the following Fig: 1.

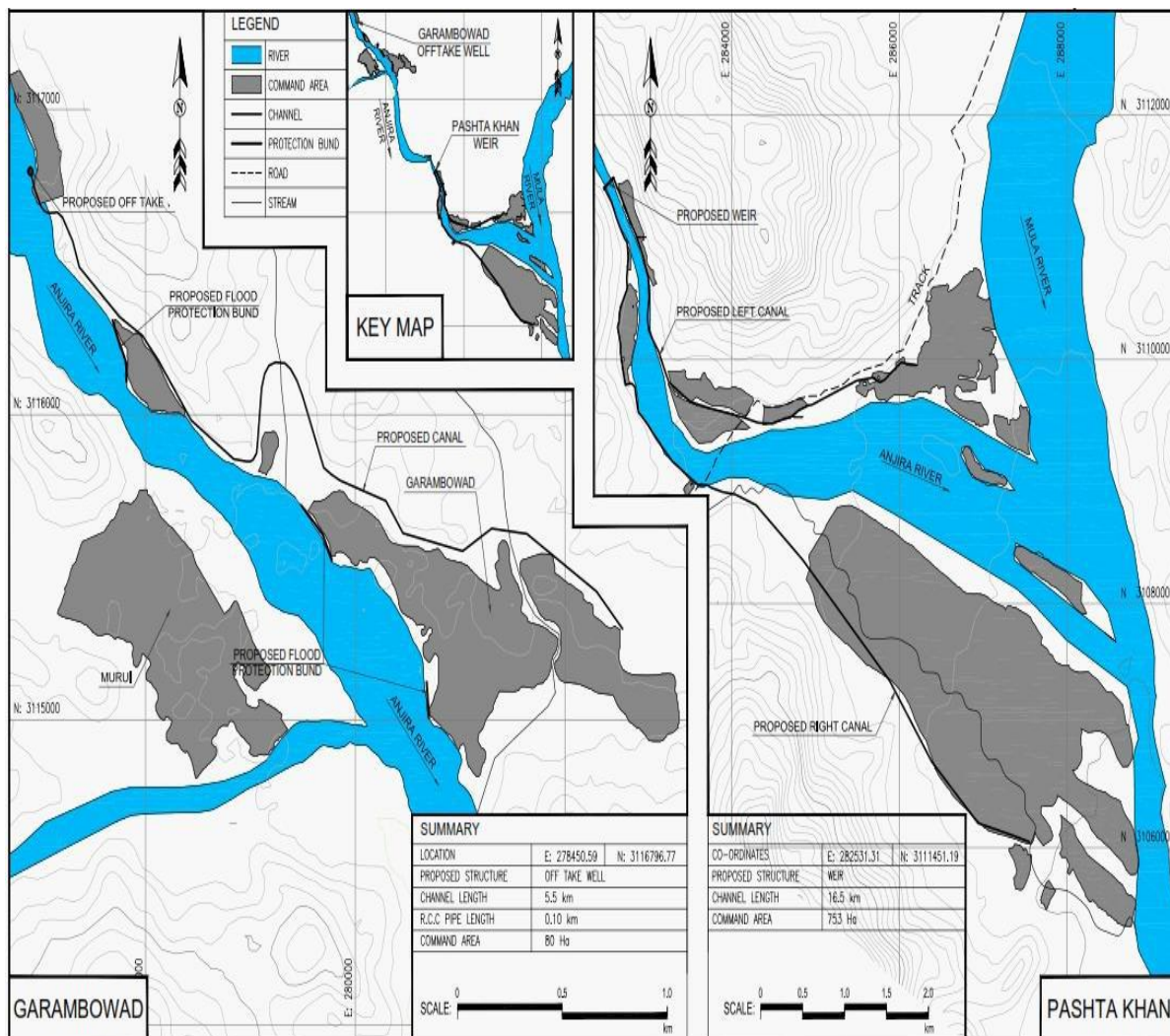


Figure 1-1: Location map of Pashta Khan & Grambowad PIS Subproject

13. Site visit was carried out with the local farmers and community members to check the existing condition of the irrigations structures. The scope of work for the subproject include remodeling of the existing irrigation system along with the rehabilitation and partial lining of perennial channels and associated structures. Table 1-2 below provides details about project components and land acquisition and resettlement (LAR) impacts.

Table 1-2: Project Components and Status of LAR Impacts

S.No.	Proposed Structures/ Works	Private Owned Land involved or not
1	Weir Pashta Khan	Not
2	Syphons Pashta Khan	Not
3	Intake Well Grambowad	Not
4	Distributer Structure for Mengalabad	Not

14. The Baluchistan Irrigation Department (BID) through Project Management Office (PMO) is the Executing Agency (EA) for the sub-project and PMO has overall responsibility of project implementation. The sub-project includes the rehabilitation of the existing Pashta Khan & Grambowad Irrigation Scheme owned by the BID. PMO being the EA, will supervise the project implementation.
15. As the PMO–BID will be overall responsible for the delivery on safeguards management, hence at PMO level, a Senior Sociologist (Grade-18) will be posted to oversee and monitor land clearing and resettlement related issues and coordinate ADB safeguards management team throughout project implementation period.

1.3 LARF AS A GUIDING FRAMEWORK

16. The LARF of this sub project is the primary guidelines in terms of Social Safeguards document as per ADB SPS-2009 policy and local laws. So with the reference of section 2.5.1 of LARF document, the present DDR is prepared based on the approved LARF.

2 NEED OF SDDR

17. This due diligence was conducted during the month of June-2021 by the project team with the involvement of PMO and the design team. The primary objective of the due diligence was to identify and assess whether the improvement/rehabilitation of Perennial Irrigation Scheme (PIS) would entail any LAR impacts and to recommend project's involuntary resettlement category after its social screening for further preparation of Land Acquisition and Resettlement Plan (LARP) based on the approved LARF, where required, in accordance with ADB's Safeguard Policy Statement 2009 (SPS) and applicable national/provincial laws and regulations.
18. The aim of the due diligence was to (a) verify if there are involuntary resettlement risks or impacts of the proposed civil works; (b) determine if there are feasible technical/engineering solutions to avoid such risks or impacts; and (c) confirm whether a LARP needs to be prepared.

2.1 SUBPROJECT CATEGORIZATION FOR INVOLUNTARY RESETTLEMENT (IR) AND INDIGENOUS PEOPLES (IPS)

19. After the assessment and screening of social impacts conducted based on scope of land acquisition and resettlement and IPs assessment (SDDR section 3.3), the subproject has been categorized as C for both Involuntary Resettlement and Indigenous Peoples Policy. (Table 2-1). The improvement/rehabilitation works of the existing Pashta Khan and Grambowad Scheme will not involve any land acquisition and resettlement impacts or demolition of any built up private properties. Similarly, the project area does not have presence of any communities or groups of people described as IPs in the ADB SPS. More specifically, local people and communities do not have recognize themselves as IPs or IP groups. Thus, this subproject is classified as C for both IR and IP, and as such no resettlement plan or an indigenous peoples plan is required for this sub-project. Nonetheless, if any unanticipated impacts arise during the project implementation, the project will report to ADB of the occurrence of such impacts and will follow the requirements of the LARF and SPS.

Table 2-1: Social Categorization of Pashta Khan and Grambowad PIS Scheme

Sr. No.	Name of Sub-project	Social Categorization	
		Involuntary Resettlement	Indigenous Peoples
1	Pashta Khan and Grambowad Perennial Irrigation Scheme (PIS)	Category "C"	Category "C"

3 THE PROJECT

3.1 PROJECT OBJECTIVE

20. The overall objective of the BWRDSP is to support the Government in water sector planning, management and investment on water sector infrastructure in selected river basins.
21. The project outcome will result in assisting the government for investment to improve water storage and supply infrastructure at the Zhob and Mula River basins to improve agricultural farm productivity.

3.2 THE SUBPROJECT OF PASHTA KHAN AND GRAMBOWAD PIS

22. The Pashta Khan and Grambowad Perennial Irrigation Scheme (PIS) involving civil works is the improvement/ rehabilitation of the existing perennial irrigation channel in District Khuzdar. The Pashta Khan and Grambowad Perennial Irrigation Scheme included the improvement/rehabilitation of existing channels owned by BID and no additional land will be acquired.

3.3 SCOPE OF LAND ACQUISITION AND RESETTLEMENT (LAR) IMPACTS

23. The improvement/rehabilitation works of the existing channels will not involve any land acquisition, resettlement or demolition of any built up private properties as all civil works will be confined within the existing ROW which varies from 19 to 49 feet wide with a narrower width at one location that varies from 8 to 27 feet as explained in the Table 3-1 below:

Table 3-1: Width of ROW owned by BID

Sr.No.	Name of Channel	Length (RD)	ROW (ft)
1	Pashta Khan Left Channel	0+000-1+000	27
		1+000-2+000	33
		2+000-3+100	30
		3+100-5+950	26
		5+950-6+190	22
2	Pashta Khan Upper Right	0+000-1+000	21
3	Pashta Khan Lower Right	1+000-2+200	27.5
		2+200-3+200	38.5
		3+200-4+050	25
		4+050-5+150	35-49
4	Grambowad Upper Channel	0+000-1+100	23
		1+100-2+350	23
		2+350-3+673	25
5	Grambowad Lower Channel	0+000-0+979	19-24
6	Mengalabad Upper Channel	0+000- 0+406	8-27

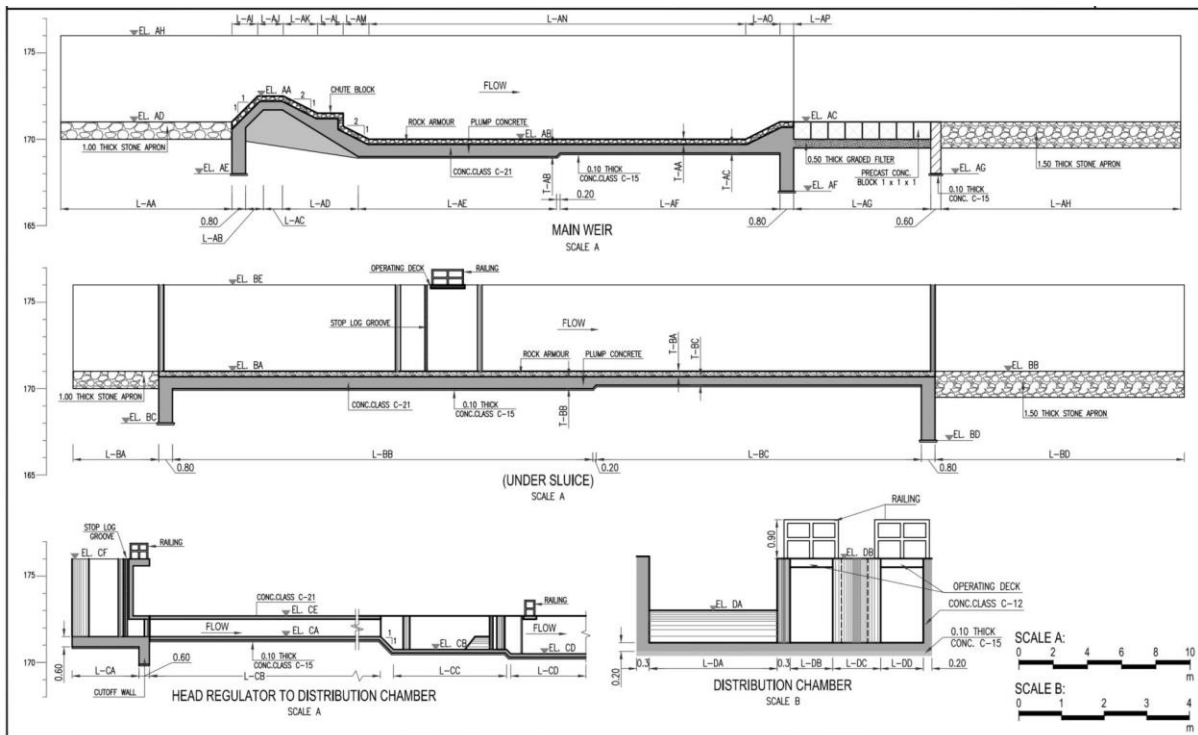


Figure 3-1: A typical Cross Section Showing ROW

24. As per design, the rehabilitation activities will require 10.4 acres of government owned land and the same quantity of land is already available to Balochistan Irrigation Department (BID). The certificate from irrigation department confirming that as per final design, all civil works will be carried out with in existing ROW belonged to BID. While scanned letter from Irrigation Department is provided in Annexure-V.

4 SOCIO-ECONOMIC PROFILE OF THE SUB-PROJECT AREA

25. The land and water rights mainly belongs to different clans of Zehri tribe including Nathwani, Bastohi and also some other tribes including Hasrani and Jattak. About 406 landholding households were reported in sub-project, which includes 200 Pashta Khan, 82 Grambowad and 124 Mengalabad (Table 4-1).

Table 4-1: Demography of the Sub-Project Area

Name of Killi	Total HHs	Total Population	Male	Female
Pashta Khan	200	1187	613	574
Grambowad	82	544	275	269
Mengalabad	124	664	353	311

4.1.1 Land Use

26. The land rights are equitable and all residents have share in land. The land of Pashta Khan and Mengalabad is reported in cadastral record while land of Grambowad has no settlement record. The cultivated land in sub-project was 833 ha, which includes 753 ha in Pashta Khan and 80 ha in Grambowad. Farmers prefer to use floodwater for irrigation as it brings sediments enriched with nutrients and thus results in reduced fertilizer cost.

4.1.2 Water Rights

27. The source is Mula river water diverted through kacha traditional diversion bund. Pashta Khan and Mengalabad share single diversion bund. While Grambowad is 8 km upstream made their own diversion bund. Significant perennial flow can be seen at both diversion sites but farmers can divert only few cusecs in earthen channels. Water is available throughout the year. There is no conflict prevailing in sub-project related to water rights and water distribution. The available water is being diverted to each of farm and water allocation is based on land holding.

4.1.3 Consensus on Water Use

28. The approach of community participation was shared with beneficiaries of each sub-project and no dispute was reported on land and water rights and farmers were agreed to participate in development of sub-project. Community demands include separate head works for Pashta Khan and Grambowad, channel lining of two separate channels for upper and lower command areas for Grambowad, channel lining for command area of Pashta Khan on right bank of river and if possible to khushkaba land across tributary river Amber Zehri, channel lining for left bank lands of Mengalabad, which also includes land owners from Pashta Khan, protection bund for sub-project command area of Grambowad, Mengalabad and Pashta Khan (including land of Pashta Khan hit by tributary Amber Zehri) also as well in khushkaba lands, structure to bring water on left bank for Mengalabad command area.

4.2 METHODOLOGY AND SAMPLING

29. To conduct the field survey for collection of required data, the following method/procedure was adopted:

- a) With the help of BID staff of relevant scheme, contacted with the influential, farmers and key informants to arrange meetings at a common place.
 - b) They were asked to gather maximum farmers and other residents of the killi belonged to each caste/tribe at a decided place and time.
 - c) With the help of design and route of channels to be rehabilitated, a list of all villages/killies fall in the command area of the scheme was updated and prepared with the consultation of locals.
 - d) Based on the list of killies, it was decided to conduct survey of all killies or on sample size covering head, middle and tail or at common place to presenting whole area.
 - e) Field visit was conducted. The stakeholders were consulted and data through structured questionnaire was collected.
 - f) Because there were no project impacts on land, structures, crops and trees, so for DDR requirements, only village profile data was collected through group discussion and consultations for primary data and relevant departments were visited and contacted to collect secondary data.
30. In case of PIS Scheme, there were three killies/ small settlements i.e. Pashta Khan, Grambowad and Mengalabad. Due to severe hot season, COVID-19 and local culture, total 81 respondents included 31 males and 50 females of two killies, Pashta Khan and Mengalabad were consulted regarding rehabilitation of scheme and for value added crops etc.
31. The survey was carried out to ascertain socio-economic condition and assessment of resettlement impacts of Pashta Khan and Grambowad Perennial Irrigation Scheme for strengthening and rehabilitation.
32. In order to collect the representative data, survey through a structured questionnaire was conducted for interview, two killies were visited and consultations were conducted with the local people. The project does not have any adverse impact on local communities so it does not require detailed socio-economic study. Moreover, data has been collected from the killies comprising 81 participants to ascertain beneficiary opinion regarding possible positive impacts from the proposed project. The main findings of the survey are provided in the following sections.

4.2.1 Tribes/Caste, Language and Religion

33. The main tribe living in the sub-project area are Zehri, Nathwani, Mengal, Channar, Dagani and Jattak. Brohi is spoken as the major language in the area while small number of the people can speak Urdu. The communities belong to Muslim religion group.

4.2.2 Literacy Ratio

34. A person was treated as literate if he or she could read newspaper and write a simple letter in any language. According to the current social survey, the literacy rate of the studied killies was less than 5 percent. These 5 percent were found only primary class education in male respondents. Amongst the female, out of 50 respondents, only 01 female was primary education. There is need to establish educational institutions in each killi to improve

4.2.3 Main Occupation of the Respondents

35. Severe poverty prevails in the killies. Their lives are miserable due to shortage of resources. The main occupation of the people of the project areas are agriculture and livestock rearing. The most of the farmers supplement their income from labor and shop keeping, transporters, private and government jobs etc. For cattle and sheep rearing large tracts of grazing land are still available. The monthly farm income ranged from Rs.4000 to 5000 while Rs.4000- to 4500 from off-farm income was recorded. The community hardly fulfill their domestic needs from their limited resources of income.
36. There is potential to grow every type of fruit plants but due to shortage of water, could not plan. With the rehabilitation of water channels, the farmers would be able to plant fruit trees to generate income resulting reduce the poverty.

4.2.4 Social Facilities & Pressing Needs

37. The situation regarding social facilities is very alarming in the sub-project area. No social and civic facilities were available in the surveyed killies. There was no facility of health in the local villages and residents have no direct access to the metaled road. Facilities of public transport are also very poor. Facilities of drinking water, sanitation and health are also missing. The facilities of primary school for boys and girls were available in both surveyed killies, but local communities were not satisfied because of poor buildings and non-availability of trained teaching staff. The overall facilities in all surveyed killies were recorded as shown in the following Table 4-2 which indicated very poor condition:

Table 4-2: Social Amenities Available in the Surveyed Killies

Facilities	Pashta Khan	Mengalabad
Hospital/Dispensary	No	No
RHU	No	No
Primary School	Yes	Yes
Middle/High Schools	No	No
Bank	No	No
Vet. Dispensary	yes	No
Shop	Yes	Yes
Post office	No	Yes
Telephone/Mobile	Mobile	Mobile
Drainage/sewerage	No	No
Police Check post	Levis	No
Grain Market	No	No
Private Dispenser	Yes	No

38. Provision of basic facilities is the obligation of the relevant department and is the right of the inhabitants of the area. Pressing needs expressed by the local people are:
- Proper irrigation infrastructure and Irrigation water supply throughout the year;
 - Rehabilitation of existing irrigations structures irrigating each killi separately;
 - Land-levelling through the department because the poor farmers cannot afford the expenditures;
 - Supply of clean drinking water; and
 - Market linkage road to get better price of agricultural products, fruits and livestock.

4.2.5 Concerns

39. Like other killies of the area, the issues and problems are almost the same as below:
40. The common concerns of the participants were related to the damages of crops, suspension irrigation water during the construction activities and movement of heavy vehicles and machineries in the residential area.
41. There are three main villages in the command area of Killi Pashta Khan, Grambowad and Mengalabad. Their concerns/issues over social mobility of the women during construction works were noted. They demanded a check and balance to control unwanted activities.

4.3 PURPOSE OF THE DUE DILIGENCE

42. The ADB's Safeguard Policy Statement (SPS) 2009 (for IR Policy) aims to "avoid involuntary resettlement wherever possible; to minimize involuntary resettlement by exploring project and design alternatives; to enhance, or at least restore, the livelihoods of all displaced persons in real terms relative to pre-project levels; and to improve the standards of living of the displaced poor and other vulnerable groups.". Following this aim of the SPS, the design of Pashta Khan & Grambowad Perennial Irrigation Scheme (PIS) have been carefully reviewed to identify any potential land acquisition or resettlement impacts.
43. The team has worked closely with the design team with the objective of adjusting the design to avoid or minimize the likely impact. The design team ensured that the rehabilitation of Pashta Khan & Grambowad Perennial Irrigation Scheme (PIS) will be carried out within the already available ROW, therefore the design component of the proposed schemes do not involve any LAR impacts. The ADB checklists of IR on land, structures and IP on Indigenous people are provided in the Annexure- II & III.

4.4 APPROACH TO CONDUCT DUE DILIGENCE

44. The following approach was adopted for conducting due diligence to define the LAR impacts:
 - a) Review of available information including SPS 2009, project design components;
 - b) Field site visits along with the PMO staff and design team to identify and assess project impacts;
 - c) Public consultations with the local residents, farmers/females, in the close proximity of project site and BID to seek their views on the project and to discuss probable project impacts (land, asset, tree, crop and structures) and mitigation measures.

5 PUBLIC CONSULTATIONS

45. The consultations comprised issues/concerns, suggestions included questioning and answering conducted with respondents of different schemes were almost similar except Siri Toi dam project, all other sub projects are to be rehabilitated and for decades, the irrigators included females of the farming communities have built a patterned behaviour towards agriculture practices, irrigation supplies and shortage, cropping pattern and its related activities that formulated their permanent behaviour of concerns and pressing needs. Thus, during consultation, similar environment was observed regarding concerns and pressing needs of the contacted communities.

5.1 CONSULTATION WITH MALE RESPONDENTS

46. Public consultation plays a vital role in studying the affect and impacts of the sub-project on the stakeholders. These consultations have vital role in obtaining the views and perception of the possible affected community for preparing the useful and sustainable policy to implement the sub-project. In this regards, consultations were conducted with the local people residing in the adjacent villages in the Sub-project area of different locations/reaches of the Pashta Khan & Grambowad schemes. The discussions focused on impacts of the rehabilitation works on the local communities' interests related to irrigation supplies. A photographs of the male/females consultations is provided in Annexure-I while scanned copies of their attendance is provided in Annexure-IV.
47. The people of the area were pleased to know about the proposed sub-project. Rehabilitation and strengthening of Pashta Khan & Grambowad schemes will be favourable for the local communities and their infrastructures. They were of the view that with the rehabilitation works, their agriculture and other related businesses will be improved and they can flourish their livelihoods. The important general objectives of the consultation process were:
- a) Conducted Walk-through survey with the community to assess project impact and provision of social facilities like washing points, foot bridge, animal ghat and wuzu place etc.
 - b) Consult local communities to share information related to the project and interventions proposed in the sub-projects and sharing with the local communities the mitigation measures included in the project design to address the potential impacts;
 - c) Create awareness among the local communities about the project and share the benefits of the subprojects for the local communities and promoting good will towards the project among the communities;
 - d) Create awareness in local communities about their participation in the project activates;
 - e) Brief Grievance Redressal Mechanism (GRM) and participation of local communities in Grievance Redressal Committees and an evolving mechanism for resolution of social and environmental problems,
 - f) Get support from the local communities in land acquisition and successful implementation of the project;
 - g) Assess positive and adverse impact of intervention related to the subprojects on the local communities;
 - h) Record concerns of the local communities related to the project activities, mitigation measures and suggestion for improvement of the project;

- i) Identify potential female activists in the project catchment areas to harmonize with the project initiatives;
- j) Assess women's participation in income generation in the sub-project areas and brief them about the income generation activities proposed in the Project. Assess role of women in agriculture and livestock rearing activities;
- k) Disclose Gender Action Plan (GAP) to males and activities proposed for the women participation and development;
- l) Assess gender issues in the area; and
- m) Assess need of women related to skill trainings and their preferences.

Table 5-1: Key Persons of the Area to arrange Consultation Meetings

Killi	Name of Key Person	Contact No.
Pashta Khan	Wadera Abdur Rehman	0335-0374642
	Rasool Bukhsh	0332-2001577
	Noor Muhammad	0333-3418858
	M.Javed	0330-7999774
Mengalabad	Allah Bukhsh	0333-3639954
	Dur Muhammad	0331-2481638
	Rehmatullah	0332-2240699
	Abdul Qudoos	0333-3157446

48. Public Consultations included meetings and interviews were conducted with the local residents, farmers, women and other stakeholders. The consultations were carried out in accordance with the IR policy of ADB's SPS 2009 and its outcome is discussed in the proceeding sections. Consultations were also held with the PMO, BID and the design teams. The list of consultation meetings is given in Table 5-1 & Table 5-2 while the scanned copies of the participants are provided in the Annexure-IV.

Table 5-2: List of Male Participants Contacted During Public Consultations

Sr. No.	Name	Occupation
Killi Pashta Khan		
1	Faqeer Ahmad	Farmer
2	Abdur Rehman	Farmer
3	Rasool Bukhsh	Farmer
4	Noor Ahmad	Farmer
5	Sikander	Farmer
6	M.Afzal	Farmer
7	Abdul Qadoos	Farmer
8	Abdullah	Farmer
9	Jameel Ahmad	Farmer
10	M.Asalam	Farmer
11	Abdul Nabi	Farmer
12	M.Javed	Farmer
13	Inayatullah	Farmer
14	Hamid Ali	Farmer
15	M.Alam	Farmer
Killi Mengalabad		
1	Abdul Rehman	Farmer
2	Allah Bukhsh	Farmer
3	Muhammad Umer	Farmer
4	Dur Muhammad	Farmer
5	Ali Muhammad	Farmer
6	Sahb Khan	Farmer
7	M.Yousaf	Farmer
8	Gohram Khan	Farmer

9	Rehmatullah	Farmer
10	Haji Khan	Farmer
11	Raheem Bukhsh	Farmer
12	Long Khan	Farmer
13	Shabbir Ahmad	Farmer
14	Ghulam Murtaza	Farmer
15	Abdul Qadoos	Farmer
16	Abdul Raheem	Farmer

Question Raised	Response
Where is the proposed site of weir?	With the help of map, proposed location of weir was briefed and also visited the site with the community people.
Where the cattle ghats and washing points will be constructed?	Suitable sites for the cattle ghats will be proposed by the communities for the easy access of cattle from the surrounding areas. Locations of washing points will also be selected with gender consultations near the village.
What is the purpose of gender consultations?	Gender consultations are mandatory for ADB funded project. Moreover, trainings for females on kitchen gardening, tree plantation, Vocational training and safe drinking water has been planned to increase domestic income. Participation of women in Grievance Redressal Committees is also necessary. Gender Consultations are being conducted to aware the women about their participation in the project components.
What is the route of the new water channel?	Route of the proposed water channels were briefed with the help of map and GPS.
Will compensation against damages of crops and trees will be provided?	If project impacts on assets etc, all damages (crops, trees and structures) will be valued and compensated according to the ADB SPS-2009.
Is there chance to provide job to the locals?	The Contractor will be bounded to provide the jobs to local unskilled persons on priority basis.

5.1.1 Mitigation Measures

49. To address the concerns related to damages of crops and loss of livelihood compensation mechanism was briefed.
50. To address the concerns of farmers/ participants were noted and briefed the design of the proposed interventions under the project. They were briefed about the location selected for the construction of weir and other structures. They were explained the route of water channels. The participants were briefed that no alignment is passing through the land of their village. Matter was discussed in detail with the design engineers.
51. During revisit of the area in April 2024, few farmers of the area wanted to understand the alignment, water flow, command area and proposed structures for distribution of water to the field. The Resident Engineer explained them with the help of drawing and locations at site. After discussions, the locals showed their satisfaction with thanks to the team.

5.1.2 Suggestion

- a) For the smooth implementation of the sub-projects, participants made following suggestions:
- b) The implementation activities should be started as early as possible and should be completed within given time;

- c) Maximum labor force should be hired from the local areas to avoid conflicts with communities;
- d) Rehabilitation works should be carried out along the existing available RoW and construction activities should be restricted inside existing ROW;
- e) Participation from the tribes should be insured in the project activities; and
- f) Drinking water supplies should be a component of the sub-projects.

5.2 GENDER CONSULTATION

52. No economic growth is possible without due participation of women in the economic activities as they constitute more than half of Pakistan's population. Ever-increasing responsibilities and lesser opportunities along with narrow exposure have always been a great challenge for women of Pakistan. Women are held responsible for doing home all home chores, upbringing children and feed families. In rural areas, women work side-by-side with men. They do home chores, farming, harvesting and manage livestock to supplement the income of the families. In spite of all this, most of times their efforts and struggle are taken for granted. They are hampered by persistent gender inequities that limit their access to decent work, which they need as a vehicle for economic empowerment, social advancement and political participation.
53. The gender and social Consultation revealed extreme poverty in the area. Women used to handle all the chores and outside regarding limited agriculture and livestock with their partners. The participants were pleased with the proposed irrigation project. They think that their land will become fertile and valuable with the supply of surface irrigation water. Over all women were not educated as out of total 50 interviewed females of Pashta Khan and Mengalabad killies, only one female was having primary class education. All were working as housewives. High-priority needs demanded by the community were clean drinking water as it was most distinctive need of the community because they have to fetch water from on every day basis for drinking purpose. The females did not know about the irrigation project in details. They were explained the project, project objectives and ADB IR policy. The following were the objectives of Gender Consultation:
- a) Create awareness among the women about gender activities provided in the GAP and ensure their participation;
 - b) Role of PIO was also explained to the females;
 - c) Identification of potential female activists in the project catchment areas to harmonize with the project initiatives;
 - d) Assessment of opportunities to develop and implement gender specific intervention in the project;
 - e) Create awareness among women about the subprojects and its components and involvement/role of the local women in the activities related to the women development proposed in the project;
 - f) Conduct needs assessment to determine the communities' choices of domestic water supply location, washing facilities, water collection points and other facilities;
 - g) Role of women in income generation activities and decision making (Agriculture, Livestock rearing and any other);
 - h) Need Assessment related to skill trainings keeping in view the GAP targets; and
 - i) Assessment of gender issues in the subprojects areas.

5.2.1 Meetings with Female Participants

54. The Sub-project areas of Killi Pashta Khan and Mengalabad are close to each other and there is same cultural back ground. Meetings held in the two villages with 50

females participants. Locations, number of participants with education and occupation is provided in the Table 5-3.

Table 5-3: List of Female Participants

S.No	Name	Education	Occupation
Killi Pashta Khan			
1	Naz Bibi	Nil	House wife
2	Fatima	Nil	House wife
3	Zainab	Nil	House wife
4	Fatima	Nil	House wife
5	Jan Bibi	Nil	House wife
6	Rahima	Nil	House wife
7	Safia	Nil	House wife
8	Hajra	Primary	House wife
9	Sakina	Nil	House wife
10	Razia	Nil	House wife
11	Naheeda	Nil	House wife
12	Rasheeda	Nil	House wife
13	Jannat Khatoon	Nil	House wife
14	Maryam	Nil	House wife
15	Sabira	Nil	House wife
16	Zulekha	Nil	House wife
17	Fareeda	Nil	House wife
18	Sher Bano	Nil	House wife
19	Gul Naz	Nil	House wife
20	Sara	Nil	House wife
21	Amina	Nil	House wife
22	Zubaida	Nil	House wife
23	Salma	Nil	House wife
24	Taj Bano	Nil	House wife
25	Savera	Nil	House wife
26	Kalsoon	Nil	House wife
27	Faiza	Nil	House wife
28	Khan Bibi	Nil	House wife
29	Zahida	Nil	House wife
30	Bilqees	Nil	House wife
31	Shahida	Nil	House wife
32	Noor Bibi	Nil	House wife
Killi Mengalabad			
1	Jamal Khatoon (1)	Nil	House wife
2	Noor Bibi	Nil	House wife
3	Zamurd	Nil	House wife
4	Jamila	Nil	House wife
5	Amna	Nil	House wife
6	Shah Bibi	Nil	House wife
7	Sakina	Nil	House wife
8	Jam Bibi	Nil	House wife
9	Jannat Khatoon(2)	Nil	House wife
10	Shah Bibi (2)	Nil	House wife
11	Dur Bibi	Nil	House wife
12	Jannat Khatoon(3)	Nil	House wife
13	Rehana	Nil	House wife
14	Afsana	Nil	House wife
15	Zakia	Nil	House wife
16	Sameera	Nil	House wife

S.No	Name	Education	Occupation
17	Mah Bibi	Nil	House wife
18	Hasina	Nil	House wife

5.2.2 Roles and Responsibilities of Women

55. Like findings of other social surveys of subprojects of Mula River basin, the women of the project area do not play active role in the agriculture and watershed management activities. Economic activities for women in the sub-project area are very rare, except the livestock rearing at home. Embroidery work and tailoring is also source of income for some women. Poultry rearing is common source of income at a very limited level.
56. In the Project area of Mula River Basin, women's freedom for movement is limited and where cultural values are strictly observed. In the sub-project area, women are not allowed to work outside of their homes and are not allowed to participate in business affairs.
57. Group Discussions were held with women to assess their involvement in livestock management. The discussions revealed that women of the area manage livestock at their homes. They spend time in preparing fodder, cleaning milking and watering of animals and without these activities livestock rearing would be incomplete. These working hours are not recognized and are unpaid. The Project area is potential suppliers of animal products for growing future needs and the role of women will remain significant in this regard and due consideration.

5.2.3 Decision Making

58. Like other surveys and studied of subproject areas, the study of Pashta Khan & Grambowad area explored the role of rural women in decision making in various family affairs. It has been observed that the role of women in decision making was very low like a marriage of children, sale and purchase of property, sale and purchase of animals, decisions regarding the schooling of children and to attend social activities. It was found during the consultations that the head of tribe male member of the family has a power of decision making. He determines the family interests and makes decisions with regard to the family. The following Table 5-4 shows the decision making authority in the area.

Decision Making code: by Men = 1, by Women = 2, by Both = 3.	
Activities	Decision By
Education where to send, whom to send	3
Health facilities (from where to avail)	3
Number of children to have	1
Children Marriages	1
Assets/property to purchase and sale	1
Women to work outside home	1

5.2.4 Gender Issues in the Sub-Project Area

59. According to the women participants their major issues were:

- Unavailability of clean drinking water, health facilities, schools for boys and girls, Drainage and sewerage system, lack of income generating activities or opportunities The community women fetch water distance is 15 minutes' walk;
- The participation of local women in government institutions is not visible because of high illiteracy rate in the areas. The community doesn't have any Vocational Center for Women and Girls. Financial services are not available in the sub-project areas.
- Women are unaware about property right and ownership;
- Drinking water is not good for health at all because of this people are suffering from disease Diarrhea, Malaria, Hepatitis, joint pain, kidney diseases especially kidney stones includes typhoid. There is no Drainage and Sewerage system;
- Private Roads, transport, vehicles. Mobile phone communication network and internet connections have a significant impact on socialization and modernization. In the sub-project areas these services are very poor. Due to the poor public transport mobility of local women is limited;
- Embroidered works are done at home by women and sometimes women sell handicrafts to support their families by creating some additional income. Women have no facility to market their products and their work, but product is not properly rewarded.
- However, females had capabilities to earn money and support their Families but they were not allowed to work out of village.

5.2.5 Pressing Needs of Women

60. During consultations women expressed following pressing needs. Most of these needs will be fulfilled through GAP component.

- Supply of clean drinking water and sanitation facilities;
- Participation of women in income generation activities;
- Provision and up gradation of medical and educational facilities;
- Provision of electricity in the village; and
- Skill trainings centers to enhance skills on income generation activities

5.2.6 Mitigation Measures to Address the Concerns

- Consultations held with the male members of the communities and they were briefed about intervention the interventions proposed for women's participation. They were motivated to allow their female members to participate in the training sessions, income generation activities and GRCs, etc.
- Through GAP component, most of the issues will be resolved.
- Session will be arranged in the clusters where women of the surrounding area could participate easily.
- Under the project, women will be involved in income earning activities; i.e. kitchen gardening, food processing and value adding in the agricultural products.

5.2.7 Provision of Social Structures

61. During consultation meetings with male and female of the project area, the provision of social structures like washing points, crossing foot bridge, animal ghat and wazu place was also discussed. During walk through survey, these demands were noted and discussed with the design team to incorporate in the design. The following social structures shown in Table 3-3 are proposed and will be constructed during the civil

works of the channels. The community demanded washing points at 08 locations and 02 wazu place of right and left channels.

Table 5-4: Provision of Social Structures/Facilities (Nos).

Sr. No.	Subproject	Access to water / washing points		Cattle ghat		Wazu point	
		Provision	Constructed	Provision	Constructed	Provision	Constructed
MRB	Pashta Khan & Grambowad Subproject	08	-	0	-	2	-

6 INFORMATION DISCLOSURE, CONSULTATION & GRIEVANCES REDRESSAL MECHANISM (GRM).

6.1 SCOPE OF CONSULTATIONS

62. Discussions and consultations on social safeguard aspects of project were held with the local residents, farmers and women in the close proximity of the project site, PMO and design consultants during the months of March & September 2020 and June 2021. During the consultations, participants were requested to express their concerns with the proposed rehabilitation of Pashta Khan & Grambowad Perennial Irrigation Scheme (PIS) and suggestions or measures that can address potential consequences and enhance project benefits.
63. The project stakeholders include the local community, farmers, general public and women. Accordingly, the group discussions were held with them to provide information about the proposed project activities and expected impacts and their concerns. Other key stakeholders include representatives of Government departments/ agencies involved in the planning, design, implementation and operation of the project, which included PMO / PIO, On Farm Water Management (OFWM), Irrigation Department etc.

6.2 GENERAL RESPONSE

64. The participants of the consultation showed pleasure regarding project activities. They were over happy that due to availability of permanent irrigation supply, their lands will be under cultivation. More income will result prosperity in the area.

6.3 ANTICIPATED GENDER ISSUES DURING CONSTRUCTION ACTIVITIES

65. Women consulted showed serious concern about restricting their movement due to movement of labor force during construction. The construction contractor will make sure that the movement of the labor force is confined within the construction camp and walking/movement routes and passages of the passerby especially women are open and are not blocked. Photographic view of the consultation is attached as **Annex-I** and scanned copies of their attendance is provided in the Annexure-IV.

6.4 GRIEVANCE REDRESS MECHANISM (GRM)

66. The Balochistan Water Resources Development Project (BWRDP) aims to support the Government in water sector planning, management and investment on water sector infrastructure in selected river basins. It will assist the government for investment to improve water storage and supply infrastructure at the Zhob and Mula River basins and improve agricultural farm productivity.
67. The Grievance Redress Mechanism (GRM), outlines the policy and procedure for documenting, addressing, responding and employing methods to resolve project grievances (and complaints) that may be raised by community members arising from environmental and social performance, the engagement process, land acquisition and resettlement and/or unanticipated environmental or social impacts resulting from project activities that are performed and/or undertaken by PMO/PIO. The document describes the scope and procedural steps and specifies roles and responsibilities of the parties involved. The purpose of the GRM is to receive, review and resolve

grievances from the locals and ensure smooth and fair implementation of subproject activities. On this subproject, no person/individual is being affected by land, assets and structures, so there is no need to form DPC. However, GRC will be formed to address the issues of person/s or community at local level.

6.4.1 Principles

68. The primary principle is that any complaints or grievances are resolved as quickly as possible in a fair and transparent manner.
69. All minor complaints regarding land or property disputes that should be resolved immediately on the site at the village level, Grievance Redressal Committees (GRC). In case the concerned parties are unable to resolve the said dispute, the complaint can be registered at PMO level. The focus of the GRM is to resolve issues in a customarily appropriate fashion and record details of the complaint, the complainant and the resolution.

6.4.2 Objectives

70. The objectives of the GRM are to:
- develop an organizational framework to address and resolve the grievances of individual(s) or community(s), fairly and equitably;
 - provide enhanced level of satisfaction to the aggrieved;
 - provide easy accessibility to the aggrieved/affected individual or community for immediate grievance redress;
 - ensure that the targeted communities and individuals are treated fairly at all times;
 - identify systemic flaws in the operational functions of the project and suggest corrective measures; and
 - ensure that the operation of the project is in line with its conception and transparently to achieve the goals for sustainability of the project.

6.4.3 Structure & Procedure of Grievance Redress Mechanism

71. The project shall have multi-tier GRM with designated staff responsibilities at each level. These levels comprise the following:

6.4.3.1 Grievances Redressal Committee (GRC) at Village Level

72. For effective coordination in the field with the locals or community, GRC will be established at the killi/village level to maintain a close rapport with affected persons and local community throughout project implementation. The GRC will act as coordinator among the PMO/PIO, the GRC and local community for coordination and information dissemination to keep them informed about day to day development on the project, particularly about the grievance resolution progress. The Senior Sociologist (PMO/PIO), Social/Community Organizer & Environment Specialist of supervision consultant (Design team) will coordinate with the complainant at the killi/village level comprising of at least five members with one as committee convener. The concerns related to any social issue or implementation & environmental should resolve within 15 days from receipt of the grievance. GRC of 1st tier will comprise of the following members;
- Social/Community Organizer (male/female) of BWRDSP Consultants

- A female member from the community / village
- Two male members from the community / village
- Environment Specialist of BWRDSP Consultants

6.4.3.2 District/ Project Management Office (PMO) Level

73. Baluchistan Irrigation Department (BID) shall constitute a Grievance Redress Committee (GRC) headed by Deputy Project Director (DPD) at District/PMO/PIO level for each river basin i.e. Zhob & Mula to resolve all grievances and complaints of the locals/community and the complainants. The GRC of 2nd tier shall comprise of the following members:

- I. Deputy Project Director, PMO / PIO Head / Convener
- II. Additional Deputy Commissioner (Revenue) Member
- III. Resettlement Specialist of BWRDSP Consultants Member
- IV. Environment Specialist of BWRDSP Consultants Member
- V. Any notable personality from the area Member

74. The GRC will meet once a month and when the need arises. The GRC will review grievances involving all implementation and environmental issues (water, Air, Noise pollution etc.) and social issues including, compensation, relocation, and other assistance as well as social issues that may arise due to restricted access to the resources and amenities.

75. GRC will perform following functions:

- Record grievances, categorize and prioritize the grievances that need to be resolved by the committee and solve them within a month;
- Summon and hear aggrieved persons/parties to produce evidence of their claims and record their view point;
- Communicate its decisions and recommendations on all resolved disputes to project executors and the aggrieved persons for implementation;
- Forward the unresolved cases to GRC-BID/project level within an appropriate time frame with reasons recorded and its recommendations;
- Develop an information dissemination system and acknowledge the aggrieved parties about the development regarding their grievance and decision of GRC-BID/project level;
- Maintain a complaint register accessible to the stakeholders with brief information about complaints and GRC decision with status report; and,
- Maintain complete record of all complaints received by the GRC with actions taken.

6.4.3.3 BID/ Project Level

76. In compliance with the Grievance Redressal Mechanism of Balochistan Water Resources Development Sector Project, the 3rd tier or Project Level - Grievance Redressal Committee (GRC) is constituted having following composition:

- Project Director / Chief Engineer Head / Convener
- Representative of the Revenue Department Member
- Representative of the Law Department Member
- Representative of the Environment Department Member

- Social Development & Gender Specialist, BWRDSP Consultant Member / Secretary
77. This GRC-BID/project level, through authorized representative, will acknowledge the complainant about his complaint, scrutinize the record of the GRC-PMO/PIO/basin, investigate the remedies available and request the complainant to produce any record in favour of his claim. After thorough review and scrutiny of the available record on complaint, visit the field and collect additional information, if required. Once the investigations are completed, the GRC-BID/project level shall give decision within 30 days of receipt of the complaint. If the complainant is still dissatisfied with the decision, he can go to the court of law for his satisfaction.
78. Gender representation will be ensured by inducting a female member in both GRCs. The mechanism will ensure the access of DPs to a GRM that openly and transparently deals with the grievances and makes decision in consultation with all concerned that are consistent with SPS-2009 and country safeguard system.
- 79.

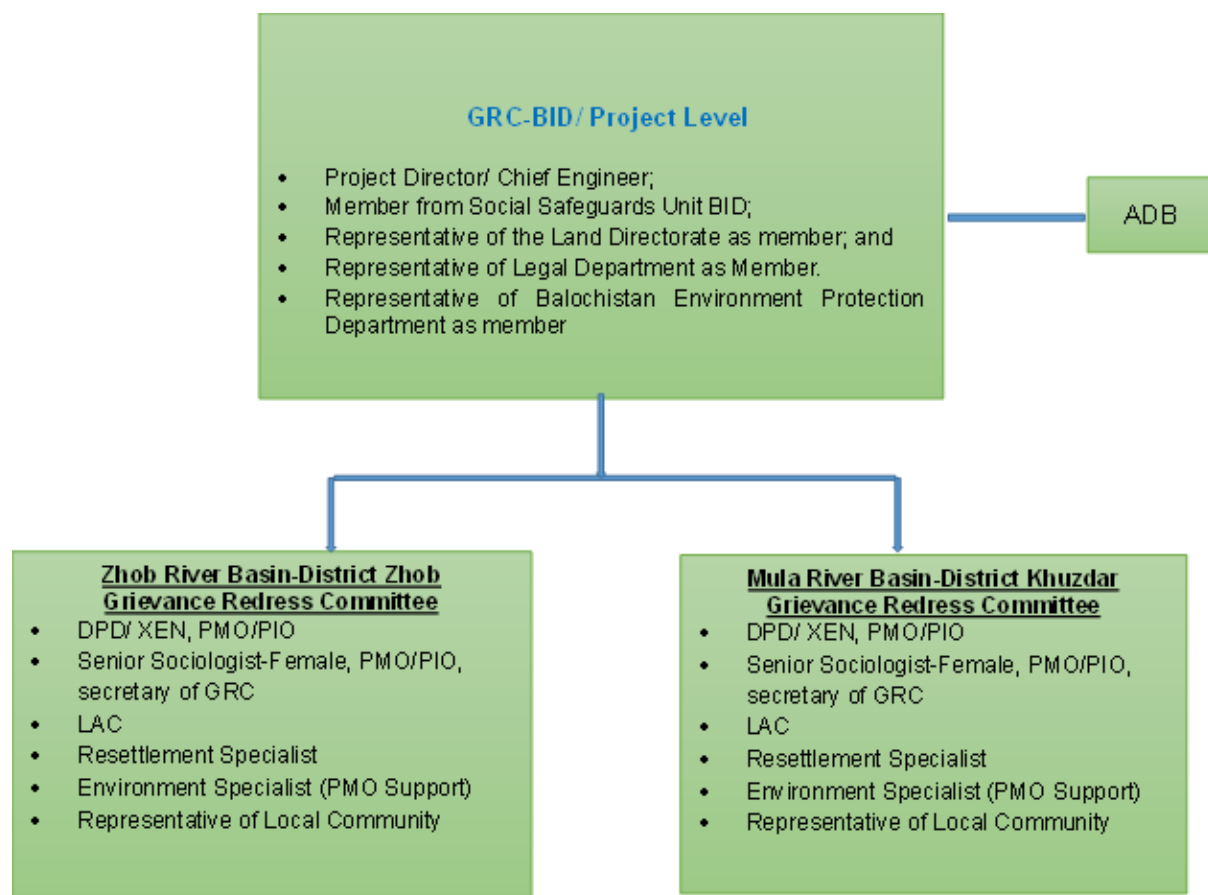


Figure 6-1: Organogram for GRM

7 FINDINGS

80. This Section describes the main findings of the Due Diligence for Rehabilitation of Pashta Khan & Grambowad Perennial Irrigation Scheme (PIS)
81. The subproject includes the rehabilitation of the already existing channels; therefore, its rehabilitation works does not involve any additional land acquisition.
82. With the rehabilitation, the section of channels will be shortened and land will be saved. That land may be used for cultivation and water will reach at tail ends as well.
83. The public consultation revealed that all the stakeholders are in favor of proposed rehabilitation of Pashta Khan and Grambowad perennial irrigation sub-project considering it positive step for agriculture development of the project area. The construction of subproject will also result in socio-economic benefits that will have an overall positive impact on the development of the local population. It will create employment opportunities for technical and non-technical staff, increase commercial activity in the project area during construction and improve the socio-economic conditions of the working staff. The construction/ rehabilitation of sub-project will also provide business opportunities to the local people as it will boost economic activity. Also, it will meet the objective to improve agriculture in the project area; and
84. The sub-project includes the construction/ rehabilitation of the existing channels and the land is owned by the BID and doesn't involve any LAR impacts. Also, no indigenous people recognized within or nearby the project area.
85. **Therefore, it has been categorized as "Category C"** both for Involuntary Resettlement **and** for Indigenous Peoples.

8 CONCLUSIONS and RECOMMENDATIONS

8.1 CONCLUSIONS

86. The sub-project at district Khuzdar has been examined for likely IR impacts, and categorized and dealt with according to ADB social safeguards policy, as provided in SPS 2009. It was found that the construction/rehabilitation of Pashta Khan and Grambowad perennial irrigation sub-project has no IR issues. It does not involve any land acquisition or resettlement impacts as the rehabilitation works includes the improvement of existing channels owned by the BID and the land is already owned by the Government; and The sub-project, therefore envisaged to cause “no IR impacts” and no indigenous peoples identified within or nearby of the sub project area and can be classified as **Category “C”** both for IR and IPs.

8.2 RECOMMENDATIONS

87. The movement of the labor force of the contractor should be confined within the project boundary so that the disturbance to the surrounding stakeholders is minimal;
88. Regular sprinkling of water should be carried out to control the dust emissions during construction;
89. The contractor should comply the mitigation measures proposed in the Environmental and Management and Monitoring Plan (EMMP);
90. Contractor's activities should be confined to avoid the public inconvenience; and
91. Grievance Redressal mechanism (GRM) at the PMO/PIO level have established to address any complaints from the stakeholders at site.
92. GRC of the subproject has been formed to play its role to resolve local issues for smooth implementation.

ANNEXURES

Annexure- I: Photographic View of Consultation Meetings in Different Killies



Male Consultation in Pashta Khan Killi



Male Consultation in Mengalabad Killi



Female Consultation in Pashta Khan Killi



Community,s Concerns are being addressed at site regarding design and water flow.

Annexure- II: ADB-Checklist of Involuntary Resettlement Impact Categorization

A. Project Data			
Country/Project No./Project Title		PAKISTAN- BWRDSP-Loan No. 3700-PAK	
		Project Design, Construction Supervision and Implementation Support for Balochistan Water Resources Development Sector Project. SDDR of Pashta Khan and Grambowad PIS Subproject.	
B. Involuntary Resettlement Category			
[<input checked="" type="checkbox"/>] New [] Re categorization — Previous Category []			
<input type="checkbox"/> Category A	<input type="checkbox"/> Category B	<input checked="" type="checkbox"/> Category C	<input type="checkbox"/> Category FI
C. Comments			
The subproject does not involve acquisition of private land, any resettlement impacts including physical or economic displacement of anyone. There are no DPs directly or indirectly affected by the remodelling and rehabilitation of Pashta Khan and Grambowad sub-project as no person/population lives in the ROW of sub-project area. Similarly, there is no loss of trees, crops, structures/ buildings and livelihoods. The land belonged to Balochistan Irrigation Department and sub-project work is only remodelling/rehabilitation channels/weirs etc. will be confined within the existing ROW. Based on the ADB involuntary resettlement impact categorization, screening checklist, this sub-project falls under category "C" and Due Diligence Report is prepared for the sub-project.			
E. Approval			
Prepared by:		Reviewed/Cleared by:	
PIC , Social and Gender Development Specialist : Date: 12-7-2024			

Involuntary Resettlement Impact Categorization Checklist

Probable Involuntary Resettlement Effects	Yes	No	Not Known	Remarks
Involuntary Acquisition of Land				
1. Will there be land acquisition?		✓		Sub-project does not involve any land acquisition. The sub-Project involves remodelling/rehabilitation of existing Pashta Khan and Grambowad PIS and its associated structures etc. No resettlement impact was recorded.
2. Is the site for land acquisition known?		✓		No Land acquisition involved
3. Is the ownership status and current usage of land to be acquired known?		✓		Balochistan Irrigation Department is the owner of that land. Existing system will be improved within existing available ROW.

4. Will easement be utilized within an existing Right of Way (ROW)?		✓		All the activity will be carried out within RoW already available belong to Irrigation Department.
5. Will there be loss of shelter and residential land due to land acquisition?		✓		
6. Will there be loss of agricultural and other productive assets due to land acquisition?		✓		
7. Will there be losses of crops, trees, and fixed assets due to land acquisition?		✓		
8. Will there be loss of businesses or enterprises due to land acquisition?		✓		All civil works activity will be carried out within RoW and there will be no displacement of people businesses.
9. Will there be loss of income sources and means of livelihoods due to land acquisition?		✓		
Involuntary restrictions on land use or on access to legally designated parks and protected areas				
10. Will people lose access to natural resources, communal facilities and services?		✓		
11. If land use is changed, will it have an adverse impact on social and economic activities?		✓		
12. Will access to land and resources owned communally or by the state be restricted?		✓		
Information on Displaced Persons:				
13. Any estimate of the likely number of persons that will be displaced by the Project? [<input checked="" type="checkbox"/>] No [<input type="checkbox"/>] Yes If yes, approximately how many? Not applicable as No one with kiosks will be relocated.				
14. Are any of them poor, female-heads of households, or vulnerable to poverty risks? [<input checked="" type="checkbox"/>] No [<input type="checkbox"/>] Yes				
15. Are any displaced persons from indigenous or ethnic minority groups? [<input checked="" type="checkbox"/>] No [<input type="checkbox"/>] Yes				

Annexure- III: ADB,s Checklist of Indigenous People Impact Categorization

<p><i>Project Data</i></p> <p>Country/Project No./Project : Pakistan, BWRDSP- Loan 3700-PAK Title <u>Project Design, Construction Supervision and Implementation Support for Balochistan Water Resources Development Sector Project.</u> SDDR of Pashta Khan and Grambowad Subproject</p>			
<p>C. Indigenous Peoples Category</p> <p style="text-align: center;">[✓] New [] Re-categorization — Previous Category []</p>			
<input type="checkbox"/> Category A	<input type="checkbox"/> Category B	<input checked="" type="checkbox"/> Category C	<input type="checkbox"/> Category FI
<p>Project requires the broad community support of affected Indigenous Peoples communities. <input type="checkbox"/> Yes <input checked="" type="checkbox"/> No</p>			
<p>Comments by PMO</p>			
<p>Project Team Comments: There are "tribes" (hill tribes, schedules tribes, tribal peoples), "minorities" (ethnic or national minorities), all are Muslim and mainstreamed in Pakistan laws and regulaitons. The tribes do not recognize themselves as IP groups as described in SPS, IP policy. Therefore, sub-project is categorized "C".</p>			
<p>Approval</p>			
<p>Prepared by: PIC, Social and Gender Development Specialist: Date: 12-7-2024</p>		<p>Reviewed/Cleared by:</p>	

Indigenous Peoples Impact Screening Checklist

KEY CONCERNS (Please provide elaborations on the Remarks column)	YES	NO	NOT KNOWN	Remarks
A. Indigenous Peoples Identification				
1.Are there socio-cultural groups present in or use the project area who may be considered as "tribes" (hill tribes, schedules tribes, tribal peoples), "minorities" (ethnic or national minorities), but no "indigenous communities" in the project area?		✓		There are "tribes" (hill tribes, schedules tribes, tribal peoples), "minorities" (ethnic or national minorities), but no "indigenous communities" in the sub-project area.
2.Are there national or local laws or policies as well as anthropological researches/studies that consider these groups present in or using the project area as belonging to "ethnic minorities", scheduled tribes, tribal peoples, national minorities, or cultural communities?		✓		
3. Do such groups self-identify as being part of a distinct social and cultural group?		✓		
4. Do such groups maintain collective attachments to distinct habitats or ancestral territories and/or to the natural resources in these habitats and territories?		✓		

KEY CONCERNS (Please provide elaborations on the Remarks column)	YES	NO	NOT KNOWN	Remarks
5. Do such groups maintain cultural, economic, social, and political institutions distinct from the dominant society and culture?		✓		
6. Do such groups speak a distinct language or dialect?		✓		
7. Has such groups been historically, socially and economically marginalized, disempowered, excluded, and/or discriminated against?		✓		
8. Are such groups represented as "Indigenous Peoples" or as "ethnic minorities" or "scheduled tribes" or "tribal populations" in any formal decision-making bodies at the national or local levels?		✓		
B. Identification of Potential Impacts				
9. Will the project directly or indirectly benefit or target Indigenous Peoples?		✓		
10. Will the project directly or indirectly affect Indigenous Peoples' traditional socio-cultural and belief practices? (e.g. child-rearing, health, education, arts, and governance)		✓		
11. Will the project affect the livelihood systems of Indigenous Peoples? (e.g., food production system, natural resource management, crafts and trade, employment status)		✓		
12. Will the project be in an area (land or territory) occupied, owned, or used by Indigenous Peoples, and/or claimed as ancestral domain?		✓		
C. Identification of Special Requirements <i>Will the project activities include:</i>				
13. Commercial development of the cultural resources and knowledge of Indigenous Peoples?		✓		
14. Physical displacement from traditional or customary lands?		✓		
15. Commercial development of natural resources (such as minerals, hydrocarbons, forests, water, hunting or fishing grounds) within customary lands under use that would impact the livelihoods or the cultural, ceremonial, spiritual uses that define the identity and community of Indigenous Peoples?		✓		
16. Establishing legal recognition of rights to lands and territories that are traditionally owned or customarily used, occupied or claimed by indigenous peoples?		✓		
17. Acquisition of lands that are traditionally owned or customarily used, occupied or claimed by indigenous peoples?		✓		

D. Anticipated project impacts on Indigenous Peoples

Project component/ activity/ output	Anticipated positive effect	Anticipated negative effect
18. Earth work to strengthen the existing channels	Not applicable	Not applicable

Annexure- IV: Scanned List of Participants of Pashta Khan and Other Killi
(Males and Females)

List of Participants of Killi Pashta Khan.

Sr. No.	Name	Father's Name	Occupation	Education	Sign/Thumb
	Faqeer Mond	Sawal Khan	Farmer	5 th	FM 0333-998
	Abdul Rehman 03350374642	Nabi Bux	Farmer	5 th	AR
	Rasool Bux 03322201577	Allah Dad	Farmer	Nil	[Thumbprint]
4	Sr Kinder 03312604140	Ali Mursad	"	Nil	[Thumbprint]
5	Noor Mond 0333418858	M. Yousof	"	Nil	[Thumbprint]
6	M. Afzal 03350393406	Khair Muhammad	"	"	[Thumbprint]
7	Abdul Qadoos	M. Azam	"	"	[Thumbprint]
8	Abdullah	M. Afzal	"	"	[Thumbprint]
9	Jameel Ahmed 03322788697	M. Afzal	"	"	[Thumbprint]
10	M. Aslam	Molla Bux	"	"	[Thumbprint]
11	Abdul Nabi	Saab Dad	"	"	[Thumbprint]
12	Javid 03307999774	Nebit Khan	"	"	[Thumbprint]
13	Armyat Ullah	M. Alam	"	"	[Thumbprint]
14	Hassid Ali	Mobit Khan	"	"	[Thumbprint]
15	M. Alam	Allah Dad	"	"	[Thumbprint]

8

SHOT ON REDMI 7
AI DUAL CAMERA

List of Participants of Killi Mengalabad

Sr. No.	Name	Father's Name	Occupation	Education	Sign/Thumb
	Abdul Raheem 03362814560	Meerim Ali	Farmer	Primary	
	Allah Bux 03333639954	Peer Muhammad	"	Nil	
	M. Usmer 03311288877	Molla Bux	"	"	
4	Dar Muhammad 03312481638	M. Usmer	"	"	
5	Ali Ahmeer	Jan Muhammad	"	"	
6	Saab Khan	Husseid Khan	"	"	
7	M. Yousaf	M. Issa	"	"	
8	Gohram Khan	Noor Bux	"	"	
9	Rehmatullah 03332240699	Haji Ahmad	"	Primary	
10	Haji Khan	M. Musai	"	"	
11	Raheem Bux	Kamal Khan	"	"	
12	Lang Khan	Meer-Muhammad	"	"	
13	Shabbid Ahmad	Shah Mota	"	"	

14- Ghulam Mustafa Kori. Mustafa / Primary /

15- Abdul Raheem / Shah Mota / Nil /

16- Anwar / Dar Muhammad / Nil /

8

List of Gender Participants of Killi: Pashta Khan

No.	Name	Age (Years)	Education	Occupation, if any	Sig./Thumb
1	Naz Bibi	60	Nil	House wife	
2	Fatima	40	"	"	
3	Zainab	65	"	"	
4	Fatima	30	"	"	
5	Jan Bibi	70	"	"	
6	Rahima	25	"	"	
7	Safia	16	"	"	
8	Hajira	18	"	"	
9	Nakira	19	"	"	
10	Razia	20	"	"	
11	Naheeda	25	"	"	
12	Rasheeda	25	"	"	
13	Jawad Khatoon	40	"	"	
14	Maryam	25	"	"	
15	Sabira	40	"	"	
16	Zulikha	40	"	"	

17. Fareeda 30

18. Sheebana 50

19. Gul Naz 44

SHOT ON REDMI 7
AI DUAL CAMERA

8

<u>S.No</u>	<u>Name</u>	<u>Age</u>	<u>Education</u> Nil	
20-	Sara	58	"	
21-	Ameena	32	"	
22-	Zubida	50	"	
23-	Salma	41	"	
24-	Taj Bano	62	"	
25	Sawera	28	"	
26	Kaleem	37	"	
27	Faiza	24	"	
28	Khan Bibi	39	"	
29-	Lahida	23	"	
30-	Bilqees	21	"	
31-	Shahida	19	"	
32-	Noor Bibi	66	"	

9

List of Gender Participants of Killi: *Mengalabad*

Sl. No.	Name	Age (Years)	Education	Occupation, if any	Sig./Thumb
1	Jamal Khaton	40	Nil	House wife	
2	Noor Bibi	25	"	"	
3	Zamrud	25	"	"	
4	Jamila	30	"	"	
5	Amna	50	"	"	
6	Shah Bibi	35	"	"	
7	Sakina	38	"	"	
8	Jam Bibi	53	"	"	
9	Janat Khaton	36	"	"	
10	shah Bibi	31	"	"	
11	Dur Bibi	43	"	"	
12	Jamat Khaton	60	"	"	
13	Rehana	19	"	"	
14	Afsana	20	"	"	
15	Zakia	19	"	"	
16	Samira	25	"	"	
17	Mah Bibi	30	"	"	
18	Haseena	29	"	"	

Annexure- V: Scanned Certificate Confirming ROW Belonged to BID

OFFICE OF THE SUB-DIVISION KHUZDAR



Ref: 125

Date: 14/8 /2021

Confirmation

It is confirmed that final design of Pashta Khan and Grambowad PIS subproject does not require extra land as the proposed construction activities for weir, syphon and water channels will be confined within the existing ROW belonging to Balochistan Irrigation Department as per records of the Revenue Department.


Sub Divisional Officer
Irrigation Sub Division Khuzdar