



**IRRIGATION DEPARTMENT  
GOVERNMENT OF BALOCHISTAN**

**PROJECT DESIGN, CONSTRUCTION SUPERVISION AND  
IMPLEMENTATION SUPPORT FOR BALOCHISTAN WATER  
RESOURCES DEVELOPMENT SECTOR PROJECT  
(LOAN 3700-PAK)**



**SOCIAL DUE DILIGENCE REPORT(SDDR)**

**CHURRI INFILTRATION GALLERY, SUBPROJECT  
MULA RIVER BASIN (MRB), KHUZDAR, BALOCHISTAN**

**JANUARY 2022**

*A Joint Venture of*



**National Engineering Services Pakistan (Pvt) Limited Lahore (Lead Partner)**



**Rehman Habib Consultants (Pvt) Limited (JV Partner)**



**Engineering General Consultants EGC (Pvt) Limited (JV Partner)**

*in association with*



**Asian Advisory Services (Pvt) Limited**

## DOCUMENT INFORMATION

<b>Category</b>	Information
<b>Document</b>	Social Due Diligence Report (SDDR)
<b>Version</b>	1.0
<b>Code</b>	
<b>Department</b>	Water & Agriculture Division
<b>Project</b>	Project Design, Construction Supervision and Implementation Support for Balochistan Water Resources Development Sector Project
<b>Status</b>	Final
<b>Author(s)</b>	NESPAK, RHC, EGC & AAS
<b>Contributors</b>	NESPAK, RHC, EGC & AAS
<b>Approver</b>	Team Leader, Project Design, Construction Supervision and Implementation Support Consultants, Balochistan Water Resources Development Sector Project
<b>Issue Date</b>	January, 2022
<b>Distribution</b>	Irrigation Department, Government of Balochistan
<b>Disclaimer</b>	This document contains confidential information. Do not distribute this document without prior approval from GM/Head W&A, NESPAK

## REVISION HISTORY

Date	Description	Version	Author
January, 2023	Social Due Diligence Report (SDDR) of Churri Infiltration Gallery Subproject, MRB.	1.0	Rana Abdur Rehman

**Project Design, Construction Supervision and Implementation Support for  
Baluchistan Water Resources Development Sector Project**

**SOCIAL DUE DILIGENCE REPORT (SDDR)  
Churri Infiltration Gallery Subproject- Mula River Basin**

**TABLE OF CONTENTS**

	<u>Page No.</u>
<b>LIST OF FIGURES</b> .....	<b>V</b>
<b>LIST OF TABLES</b> .....	<b>V</b>
<b>LIST OF ABBREVIATIONS</b> .....	<b>VI</b>
<b>1 INTRODUCTION AND BACKGROUND</b> .....	<b>1</b>
1.1 SECTOR LOAN SUBPROJECTS .....	1
1.2 CHURRI INFILTRATION GALLERY SUBPROJECT .....	2
1.3 THE SUB-PROJECT COMPONENTS .....	4
1.4 LARF AS A GUIDING FRAMEWORK .....	4
<b>2 NEED OF SDDR</b> .....	<b>4</b>
2.1 SOCIAL CATEGORIZATION OF CHURRI INFILTRATION GALLERY .....	5
<b>3 THE PROJECT</b> .....	<b>5</b>
3.1 PROJECT OBJECTIVE .....	5
3.2 THE SUBPROJECT OF CHURRI INFILTRATION GALLERY .....	5
3.3 SCOPE OF LAND ACQUISITION AND IMPACT ON NON LAND ASSETS .....	6
<b>4 SOCIO-ECONOMIC PROFILE OF THE SUB-PROJECT AREA</b> .....	<b>7</b>
4.1 METHODOLOGY AND SAMPLING .....	7
4.2 SOCIO-ECONOMIC FEATURES OF THE AREA .....	7
4.2.1 Ethnicity and Tribes .....	7
4.2.2 Religion.....	8
4.2.3 Literacy Ratio.....	8
4.2.4 Mother Tongue .....	8
4.2.5 Main Occupation of the Respondents .....	8
4.2.6 Social Amenities .....	8
4.3 PURPOSE OF THE DUE DILIGENCE.....	8
4.4 APPROACH TO CONDUCT DUE DILIGENCE.....	8
<b>5 PUBLIC CONSULTATIONS</b> .....	<b>9</b>
5.1 CONSULTATION WITH MALES RESPONDENTS .....	9
5.2 GENDER CONSULTATION.....	12
<b>6 INFORMATION DISCLOSURE, CONSULTATION &amp; GRIEVANCES REDRESSAL MECHANISM (GRM)</b> .....	<b>15</b>
6.1 SCOPE OF CONSULTATIONS .....	15
6.2 GENERAL RESPONSE .....	15
6.3 GENDER ISSUES .....	15
6.4 GRIEVANCE REDRESS MECHANISM (GRM) .....	16
6.4.1 Principles .....	16
6.4.2 Objectives.....	16
6.4.3 Structure & Procedure of Grievance Redress Mechanism .....	16

6.4.3.1	Displaced Person Committees (DPCs).....	<b>Error! Bookmark not defined.</b>
6.4.3.2	District/ Project Management Office (PMO)/ Project Implementation Office (PIO) Level .....	17
6.4.3.3	BID/ Project Level .....	17
<b>7</b>	<b>FINDINGS .....</b>	<b>19</b>
<b>8</b>	<b>CONCLUSIONS AND RECOMMENDATIONS .....</b>	<b>19</b>
8.1	CONCLUSIONS .....	19
8.2	RECOMMENDATIONS .....	20

## LIST OF FIGURES

---

Figure 1-1	Location Map of the Sub Project.....	3
------------	--------------------------------------	---

## LIST OF TABLES

---

Table 1-1	Potential Schemes to be included in the Sector Loan .....	2
Table 1-2	Project Components and Status of LAR Impacts.....	<b>Error! Bookmark not defined.</b>
Table 2-1	Social Categorization of Churri Infiltration Gallery Subproject.....	5
Table 5-1	List of Male Participants Contacted During Public Consultations .....	10
Table 5-2	List of Women Participants Contacted during Public Consultations .....	13

## LIST OF ANNEXURES

ANNEXURE-I:	ADB Checklist of Involuntary Resettlement Impact Categorization .....	41
ANNEXURE-II:	ADB Checklist of Indigenous People Impact Categorization.....	43
ANNEXURE-III:	Scanned List of Male Participants of Churri Infiltration Gallery Subproject .....	45
ANNEXURE-IV:	Scanned List of Female Participants of Churri Infiltration Gallery Subproject.....	49
ANNEXURE-V:	Departmental Confirmation of ROW Belonged to BID .....	55
ANNEXURE-VI:	Photographs of Consultation .....	55

## LIST OF ABBREVIATIONS

---

ADB	Asian Development Bank
BID	Balochistan Irrigation Department
BWRDSP	Balochistan Water Resources Development Sector Project
EA	Executing Agency
SDDR	Social Due Diligence Report
FIS	Flood Irrigation System
FO	Farmer Organization
GRC	Grievances Redress Committee
GRM	Grievances Redress Mechanism
LAR	Land Acquisition and Resettlement
LARF	Land Acquisition and Resettlement Framework
LARP	Land Acquisition and Resettlement Plan
PIO	Project Implementation Office
PMO	Project Management Office
ROW	Right of Way
SPS	Safeguards Policy Statement
TOR	Terms of Reference

## 1 INTRODUCTION AND BACKGROUND

1. The Baluchistan Water Resources Development Project (BWRDP) aims to support the Government in water sector planning, management and investment on water sector infrastructure in selected river basins. It will assist the government for investment to improve water storage and supply infrastructure at the Zhob and Mula River basins and improve agricultural farm productivity. The water resource and infrastructure development works will be implemented in territorial jurisdictions of Killa Saifullah, Zhob and Khuzdar Districts along Zhob and Mula River Basins, respectively.

2. The project will (a) construct new small dams and flood irrigation (spate) systems; (b) improve 276 km of canals, drains, and karezes (subsurface water channels); (c) develop a satellite-based water information system; and (d) build capacity of the local communities, the Baluchistan Irrigation Department (BID), and the Agriculture and Cooperative Department (ACD). The indicative outcome of the BWRDP project will be to improve land and water resources, agricultural production and farm income.

3. BWRDP is a five (05) year project, where Asian Development Bank (ADB) provides \$100 million sector loan, \$ 5million JFPR and HLTF and the Government of Baluchistan funds \$31.14 million for investment on water sector infrastructure, capacity building and project management components.

### 1.1 Sector Loan Subprojects

4. Balochistan is the largest province of Pakistan in terms of area and smallest in terms of population. It abounds to a great extent in variety and subtlety of culture and tradition, climate and vegetation, geology, relief and resources. It is reckoned to be comparatively less developed and the sole reason is scarcity and paucity of water.

5. Islamic Republic of Pakistan received a loan (3700-PAK) from the Asian Development Bank (ADB) for financing the Balochistan Water Resources Development Sector Project (BWRDSP). The project will support implementation of the integrated water resources management policy of the Government of Balochistan (GoB). The policy provides a comprehensive framework for the province to address the issues of water management and development in the context of basin approach, with water harvesting and groundwater recharging as an integral part of watershed management.

6. The project preparatory technical assistance Consultants (hereinafter called 'the TA Consultants) prepared the Balochistan Water Resource Development Sector Project (TA 8800-PAK, 2016-2018) followed by ADB's approval of a loan (3700-PAK) in the amount of \$100 million from its Ordinary Capital Resources and by JFPR a grant of \$5.0 million (administered by ADB) in 2018. The TA Consultants assisted the GoB in screening and ranking of the five potential river basins (Hingol, Mula, Pishin Lora and Zhob) and selecting the two river basins and identifying 11 sub-projects for development.

7. Government of Balochistan has now hired the services of the Consultants for Project Design, Construction Supervision and Implementation Support for Balochistan Water Resources Development Sector Project (hereinafter called 'the Consultants) will help GoB in preparing detailed design of three core sub-projects and also feasibility studies and detailed design of balance of eight non-core sub-projects as listed in Table 1.

**Table 1-1 Potential Schemes to be included in the Sector Loan**

<b>No.</b>	<b>Name of Subproject</b>	<b>River Basin</b>
1	Ahmedzai Perennial Irrigation Subproject	Zhob River Basin
2	Sabakzai Dam Command Area Rehabilitation Works	Zhob River Basin
3	Siri Toi Dam Subproject	Zhob River Basin
4	Killi Sardar Akhter Perennial Irrigation Subproject	Zhob River Basin
5	Farmers Managed PIS/FIS Subproject	Zhob River Basin
<b>6</b>	<b>Churri Infiltration Gallery Subproject</b>	<b>Mula River Basin</b>
7	Pashta Khan and Garambowad PIS Subproject	Mula River Basin
8	Karkh Valley Development Subproject	Mula River Basin
9	Kharzan Hatachi Infiltration Gallery Subproject	Mula River Basin
10	Manyalo, Raiko and Rind Ali PIS Subproject	Mula River Basin
11	Farmers Managed PIS/FIS Subproject	Mula River Basin

**Note:** Highlighted are the core subprojects

This Final SDDR has been prepared for the **Churri Infiltration Gallery Subproject**. The layout of the sub-project is shown on google earth map in Figure 1.

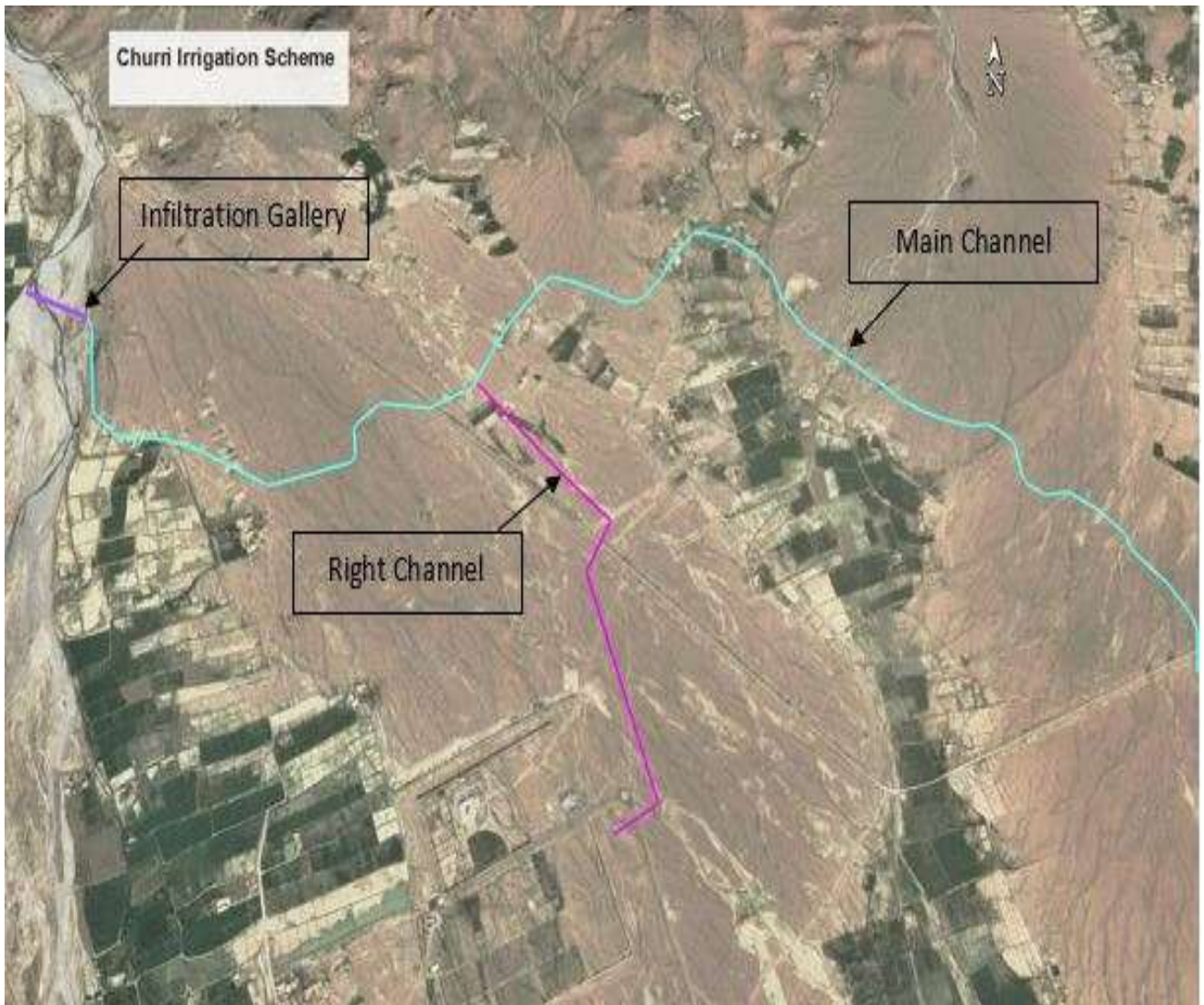
## **1.2 Churri Infiltration Gallery Subproject**

### **1. The Sub-Project Components**

The sub-project has infiltration gallery across a river along with the irrigation system. Infiltration gallery traps subsurface water to feed the lined channel leading to command area. The length of infiltration gallery is 280 m. Two channels are being constructed to irrigate the command area i.e. Main Channel & Right Channel. Total length of these channels is 7017 m. Several ancillary structures exist on the irrigation channels from the infiltration gallery which include super passages, road culverts, manhole along conduits and fall structures.

**The location map along with Channel and Disty is provided below in Figure 1-1.**

Figure 1-1: Location Map of the Sub Project Showing Main Channel and Disty.



### 1.3 The Sub-Project Components

The proposed following project activities shown in Table1-2 required the following components. All these components have no project impacts on private land and other assets and properties.

**Table 1-2 : Project Components and LAR Impact**

Sr. No.	Parameter of Irrigation Component	Quantity of Irrigation Component	LAR Impacts
	Type of Structure		
1	Construction of Infiltration Gallery	01	No LAR Impacts
2	Length of Covered Channel (km)	2.51	No LAR Impacts
3	Length of Open Channel (km)	4.51	No LAR Impacts
4	Fall Structures (number)	03	No LAR Impacts
5	Proportional Distributor (number)	01	No LAR Impacts
6	Super Passage (number)	02	No LAR Impacts
7	Outlets/Time Division Structures (number)	16	No LAR Impacts
8	Washing Structure (number)	10	No LAR Impacts
9	Cattle drinking trough (number)	05	No LAR Impacts
10	Protection works (length of guide bunds R/S) (m)	450	No LAR Impacts
11	Protection works (length of guide bunds L/S) (m)	450	No LAR Impacts
12	Design Command Area (hectare)	694	No LAR Impacts
13	Watershed Area (sq.km)	1072	No LAR Impacts

8. The Baluchistan Irrigation Department (BID) through Project Management Office (PMO) is the Executing Agency (EA) for the sub-project and PMO has overall responsibility of project implementation. The sub-project includes the rehabilitation of the existing Churri Infiltration Gallery Subproject owned by the BID. PMO being the EA, will supervise the project implementation.

9. As the PMO–BID will be overall responsible for the delivery on safeguards management, hence at PMO level a Senior Sociologist will oversee and monitor land clearing and resettlement related issues and coordinate ADB safeguards management team throughout project implementation period.

### 1.4 LARF as a Guiding Framework

The LARF of this sub project is the primary guidelines in terms of Social Safeguards document as per ADB SPS-2009 policy and local laws. So, with the reference of section 2.5.1 of LARF document, the present DDR is prepared based on the approved LARF.

## 2 NEED OF SDDR

10. This due diligence was conducted during the month of December-2022 by the project team with the involvement of PMO and the design team. The primary objective of the due diligence was to identify and assess whether the improvement/rehabilitation of the existing Churri Infiltration Gallery Subproject would entail any LAR impacts and to recommend project's involuntary resettlement category after its social screening for further preparation of Land Acquisition and Resettlement Plan (LARP) based on the approved LARF, where

required, in accordance with ADB’s Safeguard Policy Statement 2009 (SPS) and applicable national/provincial laws and regulations.

11. The aim of the due diligence was to (a) verify if there are involuntary resettlement risks or impacts of the proposed civil works; (b) determine if there are feasible technical/engineering solutions to avoid such risks or impacts; and (c) confirm whether a LARP needs to be prepared.

### 2.1 Social Categorization of Churri Infiltration Scheme

After the social screening, following categorization of the sub-project (improvement/rehabilitation of existing Churri Infiltration Gallery Subproject is recommended (Table 2-1). The improvement/rehabilitation works of the existing Churri Infiltration Irrigation Scheme will not involve any land acquisition or demolition of any built up private properties. Due to insignificant impacts of the project, the project is categorized as “C category Project”.

**Table 2-1: Social Categorization of Churri Infiltration Irrigation Scheme**

Sr. No.	Name of Sub-project	Social Categorization	
		Involuntary Resettlement	Indigenous Peoples
1	Improvement/ Rehabilitation of Churri Infiltration Irrigation Scheme	Category "C"	Category "C"

12. The improvement/ rehabilitation of existing Churri Infiltration Gallery Subproject be classified as “Category C” both for involuntary resettlement (IR) and Indigenous Peoples (IPs). If any unanticipated impacts arise during the project implementation, the project will report to ADB of the occurrence of such impacts and will follow the requirements of the LARF.

## 3 THE PROJECT

### 3.1 Project Objective

13. The overall objective of the BWRDP is to support the Government in water sector planning, management and investment on water sector infrastructure in selected river basins.

14. The project outcome will result in assisting the government for investment to improve water storage and supply infrastructure at the Zhob and Mula River basins and improve agricultural farm productivity.

### 3.2 The Subproject of Churri Infiltration Gallery Subproject

15. The sub-project does not involve any private land acquisition and demolishing of properties to carry out civil works. All civil activities will be confined within the existing ROW.

As per design, the rehabilitation of Churri Infiltration Gallery Subproject will be limited to the existing available land and already existing infrastructure. The existing land is owned by the BID. **No Additional Land Acquisition will be required for the** rehabilitation of Churri Infiltration Gallery Subproject.



## **4 SOCIO-ECONOMIC PROFILE OF THE SUB-PROJECT AREA**

### **4.1 Methodology and Sampling**

To conduct the field survey for collection of required data, the following method/procedure was adopted:

- a. With the help of BID staff of relevant scheme, contacted with the influential, farmers and key informants to arrange meetings at a common place.
- b. They were asked to gather maximum farmers and other residents of the killies belonged to each caste/tribe at a decided place and time.
- c. With the help of design and route of channels to be rehabilitated, a list of all villages/killies fall in the command area of the scheme was updated and prepared with the consultation of locals.
- d. Based on the list of villages/killies, it was decided to conduct survey of all villages/killies or on sample size covering head, middle and tail or presenting whole area.
- e. Field visit was conducted. The stake holders were consulted and data through structured questionnaire was collected.
- f. Because there was no project impact on land, structures, crops and trees, so for DDR requirements, only village profile data was collected through group discussion and consultations for primary data and relevant departments were visited and contacted to collect secondary data.

In case of Churri Infiltration Gallery subproject, two killies were enlisted i.e. Kahan and Jag soor, so the farmers/ beneficiaries included females of these killies were consulted.

17. The survey was carried out to ascertain socio-economic condition and assessment of resettlement impacts of Churri Infiltration Gallery subproject for strengthening and rehabilitation.

18. In order to collect the representative data, survey through a structured questionnaire was conducted for interview. The killies surveyed and consultations were conducted with the local people. The project does not have any adverse impact on local communities so it does not require detailed socio-economic study. Moreover, data has been collected from the killies comprising 79 participants (the list of respondents is provided in Tables 5-1 and 5-2 to ascertain beneficiary opinion regarding possible positive impacts from the proposed project. The main characteristics of the study killies are summarized below:

### **4.2 Socio-Economic Features of the Project Area**

#### **4.2.1 Ethnicity and Tribes**

In the studied killies, the main caste was Zahri and other caste were Musyami, Zarakzai, Jattak, Lotani, Kani, Dayan and Kumbrani.

#### **4.2.2 Religion**

100 percent of the population was Muslims.

### **4.2.3 Literacy Ratio**

A person was treated as literate if he or she could read newspaper and write a simple letter in any language. According to the current socio-economic survey, the literacy rate of the studied villages was 57 percent. As far as literacy level of male and female is concerned, 77 percent males were literate while 47 percent females were literate.

### **4.2.4 Mother Tongue**

Barohi is a main language spoken by the surveyed communities of the project area.

### **4.2.5 Main Occupation of the Respondents**

Out of total respondents, the main occupation of about 84 % respondents was farming and livestock rearing. Few respondents were serving in Government department as school teachers.

### **4.2.6 Social Amenities**

The facility of electricity is available in the project area. The villages in the command area are connected with the roads. The Rural Health Center, Dispensary, Private Practitioner, veterinary Dispensary, Bank and Police station/post, are available in the Kahan and Jag soor Town. The schools at primary, middle and high level for boys and girls are available and inter college also under construction in the villages of the command area.

## **4.3 Purpose of the Due Diligence**

19. The ADB's Safeguard Policy Statement (SPS) 2009 (for IR Policy) aims to "avoid involuntary resettlement wherever possible; to minimize involuntary resettlement by exploring project and design alternatives; to enhance, or at least restore, the livelihoods of all displaced persons in real terms relative to pre-project levels; and to improve the standards of living of the displaced poor and other vulnerable groups". Following this aim of the SPS, the design of the Churri Infiltration Gallery subproject has been carefully reviewed to identify any potential land acquisition or resettlement impacts.

20. The SDDR team has worked closely with the design team with the objective of adjusting the design to avoid or minimize the likely impact. The design team ensured that the rehabilitation of Churri Infiltration Gallery subproject will be carried out within the already available ROW, therefore the design component of the Churri Infiltration Gallery subproject doesn't involve any LAR impacts. The ADB checklists of IR on land, structures and IP on Indigenous people are provided in the Annexure- I & II.

## **4.4 Approach to Conduct Due Diligence**

21. The following approach was adopted for conducting due diligence survey to define the LAR impacts:

- Review of available information including SPS 2009, project design components;
- Field site visits along with the PMO staff and design team to identify and assess project impacts;

- Public consultations with the local residents, farmers, in the close proximity of project site and BID to seek their views on the project and to discuss probable project impacts and mitigation measures.

## **5 PUBLIC CONSULTATIONS**

The consultations comprised issues/concerns, suggestions included questioning and answering conducted with respondents of different schemes were almost similar because all other sub projects are to be rehabilitated, the irrigators included females of the farming communities have opted a patterned behavior towards agriculture practices, irrigation supplies and shortage, cropping pattern and its related activities that formulated their permanent behavior of concerns and pressing needs. Thus, during consultation, similar environment was observed regarding concerns and pressing needs of the contacted communities.

### **5.1 Consultation with Males Respondents**

22. Public consultation plays a vital role in studying the affect and impacts of the sub-project on the stakeholders. These consultations have vital role in obtaining the views and perception of the possible affected community for preparing the useful and sustainable policy to implement the sub-project. In this regards, consultations were conducted with the local people residing in the adjacent villages in the Sub-project area of different locations/reaches of Churri Infiltration Gallery subproject. The discussions focused on impacts of the rehabilitation works on the local communities interests related to irrigation supplies. A photographs of the Consultations is provided in Annexure-VI. The important general objectives of the consultation process were:

- Consult local communities to share information related to the project and interventions proposed in the sub-projects and sharing with the local communities the mitigation measures included in the project design to address the potential impacts;
- Create awareness among the local communities about the project and share the benefits of the subprojects for the local communities and promoting good will towards the project among the communities;
- Create awareness in local communities about their participation in the project activates;
- Brief Grievance Redressal Mechanism (GRM) and participation of local communities in Grievance Redressal Committees and Begin establishing communication and an evolving mechanism for resolution of social and environmental problems,
- Get support from the local communities in land acquisition and successful implementation of the project;
- Assess positive and adverse impact of intervention related to the subprojects on the local communities;
- Assess social facilities in the subproject areas and need assessment;
- Record concerns of the local communities related to the project activities, mitigation measures and suggestion for improvement of the project;
- Consult with farmers to assess their role in irrigation management in the present scenario- need assessment for improvement in their functioning;
- Mobilize farming communities for high value agriculture (HVA) proposed in the Project and sustainability of the project.

- Create awareness about Trainings of Farmers on solar power pumping, drip irrigation system, crops and orchards management.
- Assess activates of the Local NGOs and working in the sub-projects areas to create linkage with project development activities;
- Create awareness among women about the project, and their participation in the project activates proposed for the gender development.
- Conduct needs assessment to determine the communities' choices of domestic water supply locations, washing facilities, water collection points, and other facilities;
- Identify potential female activists in the project catchment areas to harmonize with the project initiatives;
- Assess women's participation in income generation in the sub-project areas and brief them about the income generation activates proposed in the Project. Assess role of women in agriculture and livestock rearing activities;
- Disclose Gender Action Plan (GAP) and to brief activities proposed for the women participation and development;
- Brief Grievance Redressal Mechanism (GRM) and participations of women in the GRCs;
- Create awareness about their participation in training activities- kitchen gardening and value added crops;
- Identifications of key person from the communities;
- Assess gender issues in the area; and
- Assess need of women related to skill trainings and their preferences.

23. Public consultations included meetings and interviews were conducted with the local residents, farmers, women and other stakeholders. The consultations were carried out in accordance with the IR policy requirements of ADB's SPS 2009 and its outcome is discussed in the proceeding sections. Consultations were also held with the PMO, BID and the design teams. The list of consultation meetings is given in **Table 5-1 & 5-2** while scanned copies of participants are provided in the **Annexure-III & IV**.

**Table 5-1: List of Male Participants Contacted During Public Consultations**

Village: Jag Soor					
Sr. No.	Date	Venue	Name	Occupation	Education
1	04-12-2022	Public Place	Haji Shabeer Ahmad	Farming /Livestock	Matric
2			Aslam Farooq	Farming /Livestock	B.A/B.Ed
3			Mr. Shah Baig Khan	Farming /Livestock	Matric
4			Nazeer Ahmad	Farming /Livestock	B.A
5			Khan Muhammad	Farming /Livestock	B.Ed
6			Dr. Farnis	Doctor	Ph.D
7			Muhammad Saleem	Teacher	B.A

9		Rehmat Ullah	Farming /Livestock	
10		Saleh Muhammad	Farming /Livestock	
11		Kamal Khan	Farming /Livestock	
12		Badal Khan	Farming /Livestock	
13		Muhammad Ramzan	Farming /Livestock	

**Village: Kahan**

Sr. No.	Date	Venue	Name	Occupation	Education
1	04-12-2022	Public Place	Ali Ahmad	Levis Job	Middle
2			Attaullah	Farming	FSc
3			Noor ullah	Farming	Matric
4			Ali Muhammad	Farming	Matric
5			Abdul Rahim	Farming	Matric
6			Abdul Rahim	Farming	Matric
7			Muhammad Irfan	Farming	Middle
8			Abdul Nabi	Farming	Middle
9			Mumtaz Ahmad	Farming	F. Sc
10			Abdul Rahim	Farming	F. Sc
11			Shabir Ahmad	Farming	F. Sc
12			Muhammad Anwar	Farming	Matric
13			Muhammad Ashiq	Farming	Middle

Question Raised	Response
Which Irrigation Structures have been included for rehabilitation?	All damaged structures of existing irrigation system (Rehabilitation of will be rehabilitated and salient feature of design were explained in detail.
Will unlined water channels will be lined?	Lining of the Kacha water channels is the part of the project and mostly unlined channels will be lined in the project.
What is the criteria for selecting farmers for pilot demonstration farms of solar-powered drip irrigation?	Criteria for selecting farmers provided in guidance was briefed to the participants.
What kind of trainings will be provided to the famers un the Project?	Training to the farmers will be provided in the different components such as operation of solar tube wells, drip irrigation and orchard design and management etc.

## 5.2 Gender Consultation

24. No economic growth is possible without due participation of women in the economic activities as they constitute more than half of Pakistan's population. Ever-increasing responsibilities and lesser opportunities along with narrow exposure have always been a great challenge for women of Pakistan. Women are held responsible for doing home all home chores, upbringing children and feed families. In rural areas, women work side-by-side with men. They do home chores, farming, harvesting and manage livestock to supplement the income of the families. In spite of all this, most of times their efforts and struggle are taken for granted. They are hampered by persistent gender inequities that limit their access to decent work, which they need as a vehicle for economic empowerment, social advancement and political participation.

25. The gender and social Consultation revealed extreme poverty in the killies of Churri Infiltration Gallery, subproject. The women used to handle all the chores and outside regarding limited agriculture and livestock with their partners. The participants were pleased with the proposed irrigation project. They think that their land will become fertile and valuable with the supply of surface irrigation water. Overall, 47 % of interviewed women were literate from primary level of education to graduate (B.A) level. Nearest health facility was at a distance which is inconvenience for the community especially for women who needs pre and post natal health care. High-priority needs demanded by the community were clean drinking water as it was most distinctive need of the community because they have to fetch water from on every day basis for drinking purpose. The domestic violence cases were not observed during gender discussions. The females knew about the irrigation project but not in details. They were explained the project, project objectives and ADB IR policy. The following were the objectives of Gender Consultation:

- Create awareness among the women about gender activities provided in the GAP and ensure their participation;
- Identification of potential female activists in the project catchment areas to harmonize with the project initiatives;
- Assessment of opportunities to develop and implement gender specific intervention in the project;
- Create awareness among women about the subprojects and its components and involvement and role of the local women in the activities related to the women development proposed in the project;
- Conduct needs assessment to determine the communities' choices of domestic water supply location, washing facilities, water collection points and other like facilities;
- Role of women in income generation activities and decision making (Agriculture, Livestock raring and any other);
- Need Assessment related to skill trainings;
- Assessment of gender issues and in the subproject's areas; and
- Gender concerns related to the subprojects and suggestions to get maximum benefits from the project.

The following females shown in Table 5-2 participated in the discussion regarding sub project and their socio-economic condition while the scanned copy showing their attendance & participation is provided in the Annexure-IV.

**Table 5-2: List of Women Participants Contacted during Public Consultations**

<b>Village: Kahan</b>						
	<b>Name</b>	<b>Date</b>	<b>Venue</b>	<b>Age (Years)</b>	<b>Occupation</b>	<b>Education</b>
1	Khair Bibi	04-12-2022	Public Place	50	House wife	Uneducated
2	Samira			20	House Wife	Matric
3	Mur Khatoon			25	House wife	Matric
4	Sakina			25	House wife	Matric
5	Khair Bibi			40	House wife	Uneducated
6	Sabira			50	House wife	Uneducated
7	Mahnoor			25	House wife	Matric
8	Fazila			30	House wife	Matric
9	Hameeda			35	House wife	Matric
10	Fareeda			25	House wife	Matric
11	Jannat Khatoon			50	House wife	Uneducated
12	Shaيدا			25	House wife	Matric
13	Amina			30	House wife	Uneducated
14	Afsana			20	House wife	Matric
15	Saleema			20	House wife	Matric
16	Gul Bibi			18	House wife	Matric
17	Rukhsana			18	House wife	Matric
18	Mahroosh			18	House wife	Matric
19	Gulain			18	House wife	Matric

<b>Village: Jag Soor</b>						
<b>Sr. No</b>	<b>Name</b>	<b>Date</b>	<b>Venue</b>	<b>Age (Years)</b>	<b>Occupations</b>	<b>Education</b>
1	Zulikha	05-12-2022	Public Place	50	House wife	Uneducated
2	Hanifa			45	House wife	Uneducated
3	Dur Khatoon			45	House wife	Uneducated
4	Saeeda			45	House wife	Uneducated
5	Farooz Khatoon			40	House wife	Uneducated
6	Saeeda			35	House wife	Uneducated
7	Khan Bibi			30	House wife	Uneducated
8	Gul Naz			40	House wife	Uneducated
9	Jannat			20	House wife	Uneducated
10	Hareems			35	House wife	Uneducated
11	Fareeda			45	Teacher	B. A
12	Jan Bibi			35	Teacher	B. A
13	Amina			45	Teacher	B. A
14	Sakeena			35	Teacher	B. A
15	Zainab			40	House wife	Primary
16	Jamila			35	House wife	Primary

17	Hameeda		50	House wife	Uneducated
18	Marina		18	House wife	Matric
19	Zara		16	House wife	Matric
20	Bushra		20	House wife	Matric
21	Nasreen		20	House wife	Matric
22	Fareeda		35	House wife	Uneducated
23	Tahira		18	House wife	Matric
24	Maryam		20	House wife	Uneducated
25	Reham Khatoon		50	House wife	Uneducated
26	Mah Bibi		40	House wife	Uneducated
27	Sahib Khatoon		60	House wife	Uneducated
28	Maryam		50	House wife	Uneducated
29	Haleema		35	House wife	Uneducated
30	Faiza bibi		60	House wife	Uneducated
31	Fatima		45	House wife	Uneducated
32	Zubaida		35	House wife	Uneducated
33	Zeenat		40	House wife	Uneducated
34	Shah Bibi		50	House wife	Uneducated

## 6 INFORMATION DISCLOSURE, CONSULTATION & GRIEVANCES REDRESSAL MECHANISM (GRM)

### 6.1 Scope of Consultations

26. Discussions and consultations on social safeguard aspects of project were held with the local residents, farmers and women in the close proximity of the project site, PMO and design consultants during the month of December 2022. During the consultations, participants were requested to express their concerns with the proposed rehabilitation of Churri Infiltration Gallery subproject and suggestions or measures that can address potential consequences and enhance project benefits.

27. The project stake holders include the local community, farmers, general public and women. Accordingly, the consultations/ focus group discussions were held with them to provide information about the proposed project activities and expected impacts and their concerns. Other key stakeholders include representatives of Government departments/ agencies involved in the planning, design, implementation and operation of the project, which includes PMO / PIO, On Farm Water Management (OFWM), Irrigation Department etc.

### 6.2 General Response

- During the consultation meetings, participants were informed about the rehabilitation of the Churri Infiltration Gallery, subproject and they considered it as positive step for the development of the agriculture in the area;
- The participants of the consultation showed concern that any damages to standing crops should be avoided during the construction activities;
- At the maximum extent, local labor should be engaged/ employed in the project related activities;
- The access to the agriculture fields of the local farmers should not be blocked during construction;
- During construction labor force movement should be controlled so that activities of the local population are not disturbed;
- The participants/representatives also stressed the need for timely completion of the project;
- Home privacy and routine activities especially of women should not be disturbed due to construction of work; and
- Project facilities should be located outside the existing residential areas. In order to avoid restricting the daily movement of the local community, construction vehicles should remain confined within their designated areas of movement.

### 6.3 Gender Issues

28. Women consulted showed serious concern about restricting their movement due to movement of labor force during construction. The construction contractor will make sure that the movement of the labor force is confined within the construction camp and walking/movement routes and passages of the passerby especially women are open and are not blocked.

Photographic view of the consultation activities is attached as **Annex-II**.

## 6.4 Grievance Redress Mechanism (GRM)

The Balochistan Water Resources Development Project (BWRDP) aims to support the Government in water sector planning, management and investment on water sector infrastructure in selected river basins. It will assist the government for investment to improve water storage and supply infrastructure at the Zhob and Mula River basins and improve agricultural farm productivity.

The project will (a) construct new small dams and flood irrigation (spate) systems; (b) improve 300 km of canals, drains, and karezes (subsurface water channels); (c) develop a satellite-based water information system; and (d) build capacity of the local communities and the Balochistan Irrigation Department (BID) through five (05) year project, where Asian Development Bank (ADB) provides \$100 million sector loan and the Government of Balochistan funds \$ 15 million for investment on water sector infrastructure, capacity building and project management components.

The Grievance Redress Mechanism (GRM), outlines the policy and procedure for documenting, addressing, responding and employing methods to resolve project grievances (and complaints). Because there is no DP of the project so there is no need to form Displaced Person Committee (DPC). However, GRC will be formed to observe general complaints and issue faced by the locals. The document describes the scope and procedural steps and specifies roles and responsibilities of the parties involved.

### 6.4.1 Principles

A GRM is proposed to address any complaints or grievances arising during the implementation period of the projects undertaken by the PMO/PIO. Members of the public may perceive risks to themselves or their property or their legal rights or have concerns about the possible adverse environmental and social impact that a project may have. Any concerns or grievances should be addressed quickly and transparently.

The primary principle is that any complaints or grievances are resolved as quickly as possible in a fair and transparent manner.

### 6.4.2 Objectives

The objectives of the GRM are to:

- develop an organizational framework to address and resolve the grievances of individual(s) or community(s), fairly and equitably;
- provide enhanced level of satisfaction to the aggrieved;
- provide easy accessibility to the aggrieved/affected individual or community for immediate grievance redress;
- ensure that the targeted communities and individuals are treated fairly at all times;
- identify systemic flaws in the operational functions of the project and suggest corrective measures; and
- Ensure that the operation of the project is in line with its conception and transparently to achieve the goals for sustainability of the project.

### 6.4.3 Structure & Procedure of Grievance Redress Mechanism

The project shall have multi-tier GRM with designated staff responsibilities at each level. These levels comprise the following:

#### **6.4.3.1 District/ Project Management Office (PMO)/ Project Implementation Office (PIO) Level**

Baluchistan Irrigation Department (BID) shall constitute a Grievance Redress Committee (GRC) headed by Deputy Project Director (DPD) at District/PMO/PIO level for each river basin i.e. Zhob & Mula to resolve all grievances and complaints of the DPs and the complainants. The GRC shall comprise of the following members:

- Deputy Project Director (DPD)/EXEN, PMO/PIO as head/convener of GRC;
- Senior Sociologist-Female, PMO/PIO; act as secretary of GRC
- Land Acquisition Collector (LAC) as Member;
- Resettlement Specialist;
- Environment Specialist of SC (PMO Support) and
- Any notable personality from the area to be nominated in writing by the relevant District Administration in consultation with the community.

Note: Representative from any other Department may be called as and when required by the GRC. Environmental Specialist of SC will join GRC meeting related to Environmental issues only.

The GRC will meet once a month and when the need arises. The GRC will review grievances involving all LAR planning and implementation, environmental issues (water, Air, Noise pollution etc.) and social issues including, compensation, relocation, and other assistance as well as social issues that may arise due to restricted access to the resources and amenities.

GRC will perform following functions:

- Record grievances, categorize and prioritize the grievances that need to be resolved by the committee and solve them within a month;
- Summon and hear aggrieved persons/parties to produce evidence of their claims and record their view point;
- Communicate its decisions and recommendations on all resolved disputes to project executors and the aggrieved persons for implementation;
- Forward the unresolved cases to GRC-BID/project level within an appropriate time frame with reasons recorded and its recommendations;
- Develop an information dissemination system and acknowledge the aggrieved parties about the development regarding their grievance and decision of GRC-BID/project level;
- Maintain a complaint register accessible to the stakeholders with brief information about complaints and GRC decision with status report; and,
- Maintain complete record of all complaints received by the GRC with actions taken.
- BID/ Project Level.

#### **6.4.3.2 BID/ Project Level**

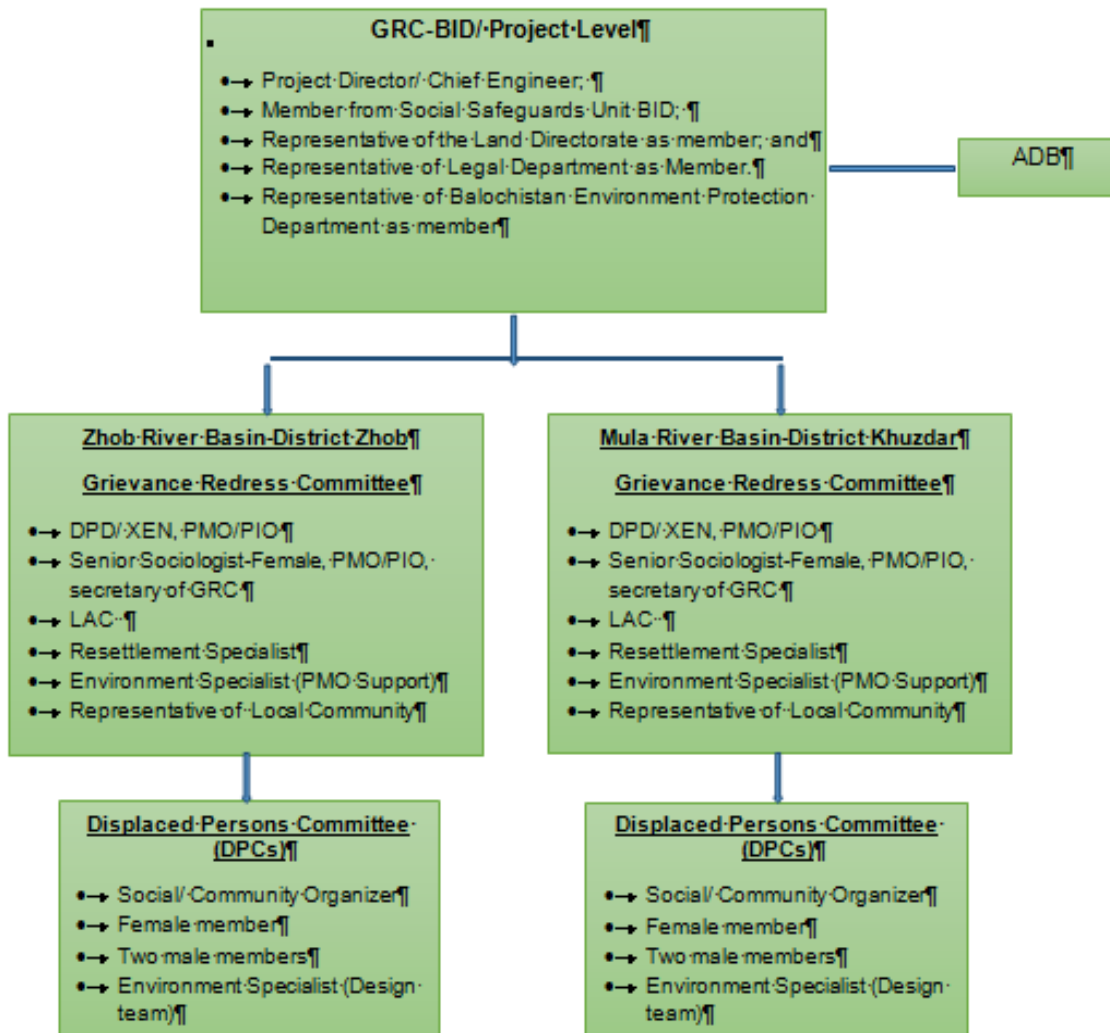
BID shall constitute a Grievance Redress Committee (GRC) at BID/ project level. The committee will have following composition:

- Project Director/ Chief Engineer, as head/ convener of GRC;
- Member from Social Safeguards (female) Unit BID;
- Representative of the Land Directorate as member; and

- Representative of the Legal Department as member.
- Representative of the Balochistan Environment Protection Department as member.

This GRC-BID/project level, through authorized representative, will acknowledge the complainant about his complaint, scrutinize the record of the GRC-PMO/PIO/basin, investigate the remedies available and request the complainant to produce any record in favour of his claim. After thorough review and scrutiny of the available record on complaint, visit the field and collect additional information, if required. Once the investigations are completed, the GRC-BID/project level shall give decision within 30 days of receipt of the complaint. If the complainant is still dissatisfied with the decision, he can go to the court of law, if he/she wishes so.

**Figure-1: Organogram for GRM**



Gender representation will be ensured by inducting a female member in both GRCs. The mechanism will ensure the access the complainants to GRM system that openly and transparently deals with the grievances and makes decision in consultation with all concerned that are consistent with SPS-2009 and country safeguard system.

## 7 FINDINGS

This Section describes the main findings of the Social Due Diligence for Rehabilitation of Churri Infiltration Gallery subproject.

- The Churri Infiltration Gallery, subproject sub-project is located in District Khuzdar. The subproject includes the rehabilitation of the already existing infrastructure; therefore its rehabilitation works does not involve any additional land acquisition.
- The public consultation revealed that all the stakeholders are in favor of proposed rehabilitation of the Churri Infiltration Gallery subproject considering it positive step for agriculture development of the project area. The construction of subproject will also result in socio-economic benefits that will have an overall positive impact on the development of the local population. It will create employment opportunities for technical and non-technical staff, increase commercial activity in the project area during construction and improve the socioeconomic conditions of the working staff. The construction/ rehabilitation of Churri Infiltration Gallery subproject will also provide business opportunities to the local people as it will boost economic activity. Also, it will meet the objective of developing agriculture in the project area; and
- The Churri Infiltration Gallery subproject include the construction/ rehabilitation of the existing infrastructure and the land is owned by the BID and doesn't involve any LAR impacts. Also, no indigenous people recognized within or nearby the project area.

Therefore, it has been categorized as “**Category C**” both for **Involuntary Resettlement** and for **Indigenous Peoples**.

The existing condition of site for Churri Infiltration Gallery, subproject in pictorial glimpse is attached as **Annex-III**.

## 8 CONCLUSIONS AND RECOMMENDATIONS

### 8.1 Conclusions

- The Balochistan Water Resources Development Project (BWRDP) aims to support the Government in water sector planning, management and investment on water sector infrastructure in selected river basins. It will assist the government for investment to improve water storage and supply infrastructure at the Zhob and Mula River basins and improve agricultural farm productivity;
- The sub-project of Churri Infiltration Gallery at District Khuzdar has been examined for likely IR impacts, and categorized and dealt with according to ADB social safeguards policy, as provided in SPS 2009. It was found that the construction/rehabilitation of Churri Infiltration Gallery sub-project had no IR issues. It does not involve any land acquisition or resettlement impacts as the rehabilitation works includes the improvement of existing infrastructure owned by the BID and the land is already owned by the Government; and
- The sub-project (Churri Infiltration Gallery, subproject) therefore, envisaged to cause “no IR impacts” and no indigenous peoples identified within or nearby of the sub project area and can be classified as **Category “C”** both for IR and IPs.

## 8.2 Recommendations

- The movement of the labor force of the contractor should be confined within the project boundary so that the disturbance to the surrounding stakeholders is minimal;
- Regular sprinkling of water should be carried out to control the dust emissions during construction;
- The contractor should comply the mitigation measures proposed in the Environmental and Management and Monitoring Plan (EMMP);
- Contractor's activities should be confined to avoid the public inconvenience; and
- Grievance redressal mechanism (GRM) at the PMO/PIO level should be established to address any complaints from the stakeholders at site.

# ANNEXURES



**ANNEXURE-I: ADB Checklist of Involuntary Resettlement Impact Categorization**

<b>A. Project Data</b>  Country/Project No./Project Title : Pakistan, BWRDSP-Loan 3700-PAK <hr/> Project Design, Construction Supervision and Implementation Support for Balochistan Water Resources Development Sector Project. SDDR of Churri Infiltration Gallery Subproject.			
<b>B. Involuntary Resettlement Category</b> <p style="text-align: center;">[ <input checked="" type="checkbox"/> ] New      [ <input type="checkbox"/> ] Re categorization — Previous Category [    ]</p>			
<input type="checkbox"/> Category A	<input type="checkbox"/> Category B	<input checked="" type="checkbox"/> Category C	<input type="checkbox"/> Category FI
<b>C. Comments</b> <div style="display: flex;"> <div style="width: 45%; padding: 5px;"> <p>There is no land acquisition and physical displacement involved in the sub-project. There are no persons directly or indirectly affected by the remodelling and rehabilitation of Churri Infiltration Gallery Subproject as no person/population lives in the ROW of sub-project area. Similarly, there is no loss of trees, crops, structures/ buildings and livelihoods. All land belongs to Balochistan Irrigation Department and sub-project work is only remodelling/rehabilitation channels/weirs etc. Based on the ADB involuntary resettlement impact categorization, screening checklist, this sub-project falls under category “C” and Due Diligence Report is prepared for the sub-project.</p> </div> <div style="width: 55%;"></div> </div>			
<b>E. Approval</b>			
<b>Prepared by:</b> Rana Abdur Rehman  PIC, Social Safeguard Specialist: Date: 5-01-2022		<b>Reviewed/Cleared by:</b>	

Probable Involuntary Resettlement Effects	Yes	No	Not Known	Remarks
<b>Involuntary Acquisition of Land</b>				
1. Will there be land acquisition?		✓		Sub-project does not involve any land acquisition. The sub-Project involves remodelling / rehabilitation of existing Churri Infiltration Gallery Subproject. No resettlement impact was recorded.
2. Is the site for land acquisition known?		✓		No Land acquisition involved
3. Is the ownership status and current usage of land to be acquired known?		✓		Irrigation Department is the owner of the land.
4. Will easement be utilized within an existing Right of Way (ROW)?		✓		All the activity will be carried out within RoW already available belonged to Balochistan Irrigation Department.
5. Will there be loss of shelter and residential land due to land acquisition?		✓		
6. Will there be loss of agricultural and other productive assets due to land acquisition?		✓		
7. Will there be losses of crops, trees, and fixed assets due to land acquisition?		✓		
8. Will there be loss of businesses or enterprises due to land acquisition?		✓		All civil works activity will be carried out within RoW and there will be no displacement of people's businesses etc.
9. Will there be loss of income sources and means of livelihoods due to land acquisition?		✓		
<b>Involuntary restrictions on land use or on access to legally designated parks and protected areas</b>				
10. Will people lose access to natural resources, communal facilities and services?		✓		
11. If land use is changed, will it have an adverse impact on social and economic activities?		✓		
12. Will access to land and resources owned communally or by the state be restricted?		✓		
<b>Information on Displaced Persons:</b>				
13. Any estimate of the likely number of persons that will be displaced by the Project?				[✓] No [ ] Yes
If yes, approximately how many? Not applicable as No one with kiosks will be relocated.				
14. Are any of them poor, female-heads of households, or vulnerable to poverty risks?				[✓] No [ ] Yes
15. Are any displaced persons from indigenous or ethnic minority groups?				[✓] No [ ] Yes

## ANNEXURE-II: ADB Checklist of Indigenous People Impact Categorization

### Indigenous Peoples Impact Screening Checklist

<b>Project Data</b>				
Country/Project No./Project Title : Pakistan, BWRDSP-Loan 3700-PAK				
Project Design, Construction Supervision and Implementation Support for Baluchistan Water Resources Development Sector Project				
<b>SDDR of Churri Infiltration Irrigation Subproject-MRB.</b>				
C. Indigenous Peoples Category				
<input checked="" type="checkbox"/> New <input type="checkbox"/> Re-categorization — Previous Category [    ]				
<input type="checkbox"/> Category A	<input type="checkbox"/> Category B	<input checked="" type="checkbox"/> Category C	<input type="checkbox"/> Category FI	
Project requires the broad community support of affected Indigenous Peoples communities. <input type="checkbox"/> Yes <input checked="" type="checkbox"/> No				
Comments by PMO				
There are "tribes" (hill tribes, schedules tribes, tribal peoples), "minorities" (ethnic or national minorities), but no "indigenous communities" in the Sub-project area. The sub-project is categorized "C"				
Approval				
Prepared by: Rana Abdur Rehman			Reviewed/Cleared by:	
Social Safeguard Specialist:				
Date: 5-1-2023				
(Please provide elaborations on the Remarks column)	YES	NO	NOT KNOWN	Remarks
<b>1. Indigenous Peoples Identification</b>				
1. Are there socio-cultural groups present in or use the project area who may be considered as "tribes" (hill tribes, schedules tribes, tribal peoples), "minorities" (ethnic or national minorities), or "indigenous communities" in the project area?		X		The sites fall In the Mula River Basin Subproject area (MRB), such group/community does not have presence or socio-cultural groups who recognize themselves as IPs or any groups so defined. Moreover, the subproject has no effects on relocation or migration of the peoples.
2. Are there national or local laws or policies as well as anthropological researches/studies that consider these groups present in or using the project area as belonging to "ethnic minorities", scheduled tribes, tribal peoples, national minorities, or cultural communities?		X		Ethnic minorities", scheduled tribes, tribal peoples, national minorities, or cultural communities as defined in SPS do not exist in the project area.
3. Do such groups self-identify as being part of a distinct social and cultural group?		X		same as above.
4. Do such groups maintain collective attachments to distinct habitats or ancestral territories and/or to the natural resources in these habitats and territories?		X		same as above.
5. Do such groups maintain cultural, economic, social, and political institutions distinct from the dominant society and culture?		X		In Pakistan, such groups have equal rights to maintain their cultural, economic, social, and political identification. No such group exist in the subproject area.

6. Do such groups speak a distinct language or dialect?		X		Not Applicable
7. Has such groups been historically, socially, and economically marginalized, disempowered, excluded, and/or discriminated against?		X		Not Applicable
8. Are such groups represented as "Indigenous Peoples" or as "ethnic minorities" or "scheduled tribes" or "tribal populations" in any formal decision-making bodies at the national or local levels?		X		Not Applicable
<b>B. Identification of Potential Impacts</b>				
9. Will the project directly or indirectly benefit or target Indigenous Peoples?		X		No.
10. Will the project directly or indirectly affect Indigenous Peoples' traditional socio-cultural and belief practices? (e.g. child-rearing, health, education, arts, and governance)		X		The proposed subproject have not any adverse effects on any segment/group of local communities. There is no such group of people/IPs, so the policy and law does not apply for their safeguards.

11. Will the project affect the livelihood systems of Indigenous Peoples? (e.g., food production system, natural resource management, crafts and trade, employment status)		X		Not Applicable.
12. Will the project be in an area (land or territory) occupied, owned, or used by Indigenous Peoples, and/or claimed as ancestral domain?		X		
<b>C. Identification of Special Requirements</b>				
<i>Will the project activities include:</i>				
13. Commercial development of the cultural resources and knowledge of Indigenous Peoples?		X		None
14. Physical displacement from traditional or customary lands?		X		None
15. Commercial development of natural resources (such as minerals, hydrocarbons, forests, water, hunting or fishing grounds) within customary lands under use that would impact the livelihoods or the cultural, ceremonial, spiritual uses that define the identity and community of Indigenous Peoples?		X		None
16. Establishing legal recognition of rights to lands and territories that are traditionally owned or customarily used, occupied, or claimed by Indigenous Peoples?		X		None
17. Acquisition of lands that are traditionally owned or customarily used, occupied, or claimed by Indigenous Peoples?		X		None

**D-Anticipated project impacts on Indigenous Peoples: Not applicable**

<b>Project component/ activity/</b>	<b>Anticipated positive effect</b>	<b>Anticipated negative effect</b>
1.Establishment of Contractor, s camp at site to carry out construction activities.	Not applicable	Not applicable
2. Rehabilitation and improvement of existing irrigation system.	Not applicable	Not applicable

**ANNEXURE-III: Scanned List of Male Participants of Churri Infiltration Gallery Subproject**

List of Participants of Kill JAGTA SUR

Sr. No.	Name	Father's Name	Occupation	Education	Sign/Thumb
(1)	Haji Shabeer Ahmad	Sayyidullah	Farmer	Matric.	
(2)	Aslam Farooq.	Farooq.	Principal	B.A. B.Ed	
(3)	Mir. Shah Baidar Khan	Mir Jawad Khan Zeltri	Farmer	Matric	
(4)	NAZEER AHMED	Muhammad Nazeer	Farmer	B.A	
(5)	Ikhwan Muhammad	Shah Baidar Khan	Farmer	B.A.D	 (0333-7815221)
(6)	Dr. Faris	Larance	Education	Ph.D	
(7)	Muhammad Saleem	Gh. Fareed	Teacher	B.A	
(8)	Abdul Nabi	Abdul Aziz	Farmer		
(9)	Rehmatullah	Wali dad	Farmer		
(10)	Saleh Mohd	Nazar Khan	Farmer		
(11)	Kamal Khan	Den Mohammad	Farmer		
(12)	Badal Khan	Haji Khan	Farmer		
(13)	Mohammad Ramzan	Kabar Khan	Farmer		

List of Participants of Killi Chumri KAHAN

Sr. No.	Name	Father's Name	Occupation	Education	Sign/Thumb
1	Ali Ahmad	Gadir Bakshi	Levis	8 <sup>th</sup> pass	
2	Attahllah	Fird Muhammad	Former	F.S.c	
3	Noorullah	Mir Muhammad	Former	Metric	
4	Ali Muhammad	Gadi Bux	Former	Metric	0331-32 47930
5	Abdul Rahim	Shakar Khan	Former	Metric	
6	Muhammad Isfan	Ikhsan Bux	Former	Middle	
7	Abdul Nabi	Abdul Rasool	Former	Middle	
8	Munir Ahmed	Ikhsan Bux	Former	F.S.c	
9	Abdul Rahim	Ghulam Haider	Former	F.S.c	
10	Shabir Ahmed	Sardullah	Former	F.S.c	
11	Muhammad Anwar	Muhammad Bux	Former	Metric	
12	Muhammad Ishtiaq	Muhammad Bux	Former	Middle	

**ANNEXURE-IV: Scanned Copies of Gender Participants of Churri Infiltration Gallery Subproject**

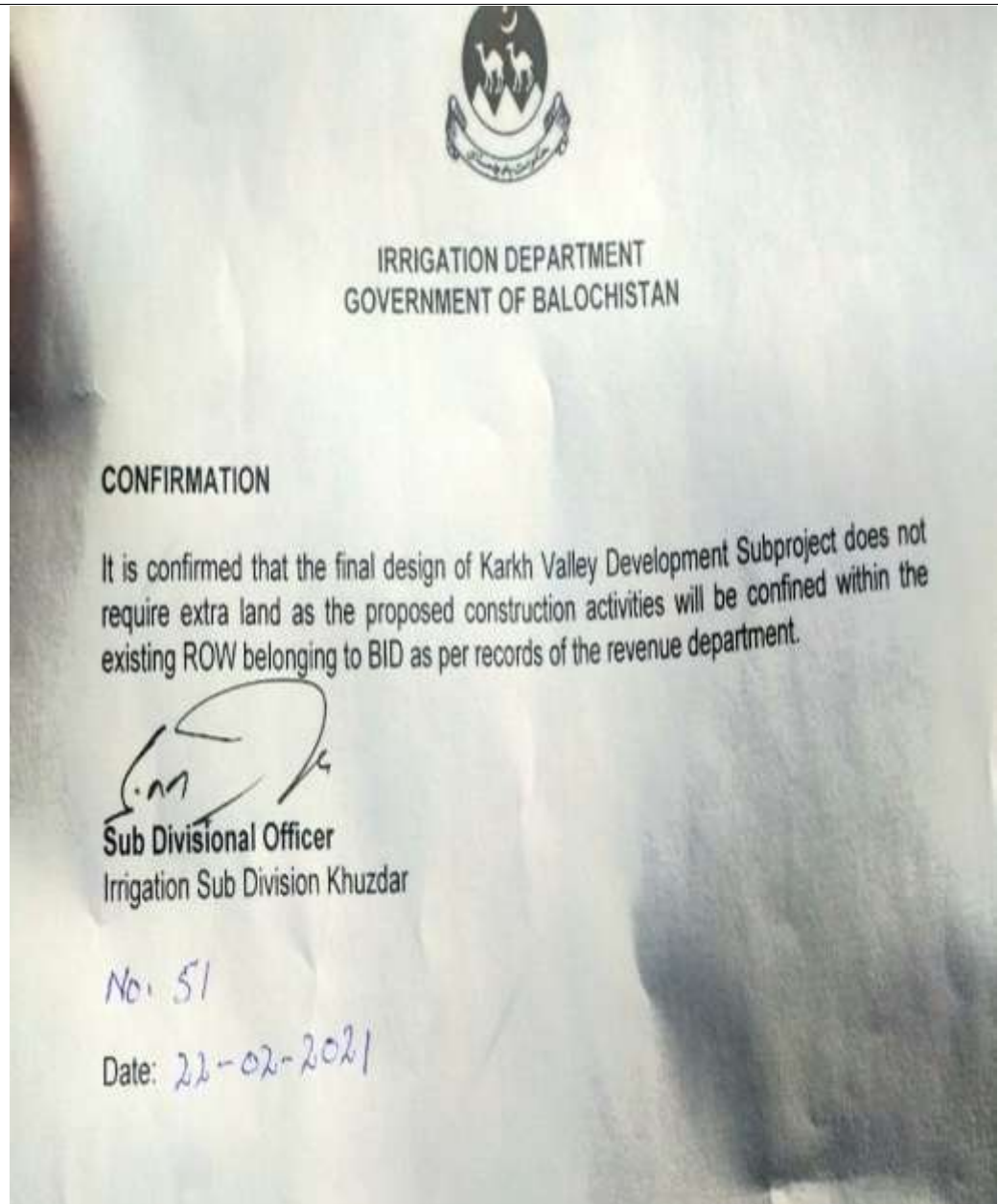
List of Participants of Killi: ..... Kahan .....

No.	Name	Age (Years)	Education	Occupation, if any	Sig./Thumb
1	Khair Bibi	50	Un-educated	House wife	
2	Sauara	20	Matric	"	Suricee
3	Murkhaton	25	Matric	"	
4	Nafina	25	Matric	"	
5	Khair Bibi	40	Un-educated	"	
6	Nahira	50	Un-educated	"	
7	Mahnoor	25	Matric	"	Mahnoor
8	Fazila	30	"	"	Fazila
9	Hameeda	35	"	"	Hameeda
10	Fareeda	25	"	"	
11	Tannakhaton	50	un-educated	"	
12	Shaide	22	Matric	"	Shaide
13	Amina	30	Un-educated	"	
14	Afsana	20	Matric	"	Afsana
15	Bakeem	20	"	"	Saleema
16	Gul Bibi	18	"	"	Gul Bibi
17	Rukhsana	18	"	"	Rukhsana
18	Mahboosh	18	"	"	Mahboosh
19	Gulain	18	"	"	Gulain

List of Participants of Killi: ..... Kaban .....

No.	Name	Age (Years)	Education	Occupation, if any	Sig./Thumb
1	Khair Bibi	50	Un-educated	House wife	
2	Samra	20	Matric	"	Samra
3	Murkhatoon	25	Matric	"	Murkhatoon
4	Sakina	25	Matric	"	Sakina
5	Khair Bibi	40	Un-educated	"	
6	Rabira	50	Un-educated	"	
7	Mahmood	25	Matric	"	Mahmood
8	Fazila	30	"	"	Fazila
9	Hameeda	35	"	"	Hameeda
10	Fareeda	25	"	"	Fareeda
11	Tanzaltraton	50	Un-educated	"	
12	Shaida	22	Matric	"	Shaida
13	Aamina	30	Un-educated	"	
14	Afsana	20	Matric	"	Afsana
15	Saleema	20	"	"	Saleema
16	Gul Bibi	18	"	"	Gul Bibi
17	Rukhsana	18	"	"	Rukhsana
18	Makrosh	18	"	"	Makrosh
19	Gulain	18	"	"	Gulain

**ANNEXURE-V: Departmental Confirmation of ROW Belonged to BID**



**ANNEXURE VI: Photographs of Consultation**



**Gender Consultation in the Villages of Churri Irrigation Subproject-MRB.**



**Male Consultation in the Villages of Churri Irrigation Subproject-MRB.**